

# FRONT *of* HOUSE ESSENTIALS

A stunning selection of styles for  
tempting tabletops, bold buffets & better bars



Follow these icons for fun  
and informative videos



# TABLE OF CONTENTS

## **ABC**

Page 5, 14, 28, 29

## **American Metalcraft**

Page 20

## **BarFly Mixology Gear**

Page 12, 13

## **Cal-Mil**

Page 22, 23

## **Cambro**

Page 16, 17

## **Crown Brands**

Page 8, 15, 29, 31

## **Elite Global Solutions**

Page 6

## **Equipex**

Page 27

## **Hollowick**

Page 10, 11

## **John Ritzenthaler Company**

Page 7

## **Libbey**

Page 3

## **Rosenthal Sambonet USA**

Page 4, 21

## **Service Ideas**

Page 25

## **Sterno Products**

Page 8, 9, 30

## **Tablecraft**

Page 18, 19, 26

## **Vollrath**

Page 24



## AUDREY FLATWARE

Add a flash of brilliance to the table when the light reflects off the diamond-like faceted handles.

- 18/10 stainless steel
- Finely polished
- Packed 1 dz

945 001	Teaspoon
945 027	Dinner Fork
945 2701	Dinner Knife

## PRISM GLASSWARE

Seam-free glassware with a refined flat foot and impeccable balance. Classic styling for an exquisite beverage presentation.

- ClearFire™ glass for maximum clarity and brilliance
- HD2 (High Definition & High Durability) Rim and Foot Lifetime Guarantee
- Packed 1 dz

9324	Wine Glass, 20 oz
9192	Double Old Fashioned, 12 oz



## STATUS DINNERWARE

**AN AESTHETICALLY AND  
TACTILELY INTRIGUING** faceted  
surface gives a modern sophisticated vibe  
unlike any other.

- Durable and beautiful Royal Rideau™ body color delivers an elegant premium aesthetic
- Lifetime no-chip warranty

988001774	Deep Plate, 8"	2 dz
988001785	Deep Plate, 11"	1 dz
988001158	Square Plate, 10½"	1 dz
988001078	Platter, 13"	1 dz
988001705	Bouillon, 9 oz	3 dz





# BASE DINNERWARE

**DESIGN AND FUNCTIONALITY** come together for a sophisticated, full range of high-quality tableware. Base gives chefs a perfectly smooth, blank canvas that beautifully frames any dish.

- White matte finish

## Dinnerware

<b>B9214700</b>	Low Round Plate, 2 $\frac{3}{8}$ " x $\frac{5}{8}$ "
<b>B9214705</b>	Low Round Plate, 9 $\frac{1}{2}$ " x $\frac{5}{8}$ "
<b>B9214710</b>	High Round Plate, 7 $\frac{7}{8}$ " x 1 $\frac{1}{8}$ "
<b>B9214713</b>	High Round Plate, 12 $\frac{1}{4}$ " x 1 $\frac{1}{8}$ "
<b>B9214723</b>	Deep Bowl, 6 $\frac{1}{4}$ " x 3"
<b>B9214730</b>	Tea Cup, 13 $\frac{1}{2}$ oz

## Flatware

<b>B1318100</b>	Table Fork, 8 $\frac{1}{4}$ "
<b>B1318101</b>	Table Spoon, 8 $\frac{1}{4}$ "
<b>B1318102</b>	Table Knife, 9"

Other sizes and styles also available



# SERAX

Distributed by  
Rosenthal



## MERCI TABLETOP COLLECTION

Inspired by the famous 'American Modern Dinnerware' by Russel Wright and by the traditional Japanese *bento*. This coordinating collection of dinnerware, glasses and flatware can be mixed and matched, stacked and fitted together.

- Sandstone dinnerware and maple wood trays

## Maple Trays

<b>B0217107</b>	4 $\frac{1}{2}$ " x 5 $\frac{3}{4}$ " x $\frac{5}{8}$ "
<b>B0217106</b>	6" x 8 $\frac{2}{3}$ " x $\frac{5}{8}$ "
<b>B0217105</b>	9 $\frac{1}{2}$ " x 12 $\frac{5}{8}$ " x $\frac{3}{4}$ "

## Glass

<b>B0817823</b>	6 $\frac{3}{4}$ oz, 2 $\frac{1}{4}$ "
<b>B0817824</b>	10 oz, 3 $\frac{1}{2}$ "

## Dinnerware - Blue/Grey

<b>B5117114</b>	Plate, 3 $\frac{7}{8}$ " x 2 $\frac{1}{2}$ " x $\frac{1}{4}$ "
<b>B5117110</b>	Plate, 5 $\frac{3}{4}$ " x 4 $\frac{1}{8}$ " x $\frac{1}{2}$ "
<b>B5117102</b>	Platter, 12 $\frac{5}{8}$ " x 9" x $\frac{3}{4}$ "
<b>B5117134</b>	Cup, 6.1 oz, 2 $\frac{7}{8}$ "

## Bowls - Red

<b>B5118225</b>	5.1 oz, 3 $\frac{5}{8}$ " x 5" x 1 $\frac{1}{8}$ "
<b>B5118213</b>	16.9 oz, 5" x 6" x 3 $\frac{3}{4}$ "
<b>B5118201</b>	33.8 oz, 6" x 3 $\frac{5}{8}$ "

## S/S Flatware - Stone Wash

<b>B0717002</b>	Spoon, 5 $\frac{1}{2}$ " x 1"
<b>B0717008</b>	Fork, 5 $\frac{1}{2}$ " x $\frac{3}{4}$ "
<b>B0717004</b>	Spork, 5 $\frac{1}{2}$ " x 1"
<b>B0717006</b>	Knife, 5 $\frac{1}{2}$ " x $\frac{5}{8}$ "

Other sizes and styles also available

# SERAX

Distributed by  
Rosenthal





## SOLERA FLATWARE

Clean lines and simple styling exude a sense of understated beauty.

- 18/0 mirror polished stainless steel

<b>SOL-01</b>	Teaspoon
<b>SOL-02</b>	Bouillon Spoon
<b>SOL-04</b>	Iced Tea Spoon
<b>SOL-05</b>	Dinner Fork
<b>SOL-06</b>	Salad Fork
<b>SOL-08</b>	Dinner Knife

More shapes also available

## LUCERO FLATWARE

Perfectly balanced teardrop-shaped handles add a polished finish to any setting.

- 18/0 stainless steel

<b>LUC-01</b>	Teaspoon
<b>LUC-02</b>	Bouillon Spoon
<b>LUC-04</b>	Iced Tea Spoon
<b>LUC-05</b>	Dinner Fork
<b>LUC-06</b>	Salad Fork
<b>LUC-08</b>	Dinner Knife

More shapes also available



## CLASSIC BRIGHT WHITE CHINA

### CLASSIC, VERSATILE SHAPES

in both narrow rim and rolled edge styles.

<b>Narrow Rim</b>	
<b>BWNAR-9</b>	Plate, 9½"
<b>BWNAR-13</b>	Platter, 11½"
<b>BWNAR-11</b>	Fruit Bowl, 4¾ oz, 4⅞"
<b>BWNM-8-W</b>	Mug, 8½ oz
<b>BWNAR-2</b>	Saucer, 5½"
<b>Rolled Edge</b>	
<b>BWWRC-5</b>	Plate, 5½"
<b>BWWRC-8</b>	Plate, 9"
<b>BWWRC-14</b>	Platter, 13½"
<b>BWWRC-4</b>	Bouillon, 7 oz
<b>BWWRC-24</b>	Nappie, 10 oz, 5¼"
<b>BWWRC-3</b>	Rim Soup, 25½ oz, 9"
<b>BWWRC-35</b>	A.D. Cup, 3½ oz
<b>BWWRC-36</b>	A.D. Saucer, 5"

More styles and shapes also available



## KONA™ & INFINITY™ MELAMINE DINNERWARE

The contemporary coupe shapes of Kona™ pair well with the versatility of the Infinity™ pieces.

- Matte-finished melamine
- Two-tone design
- Available in White Speckle/Chocolate
- Infinity also available in White/Black

### Kona™ Dinnerware

**B625R2T-WS/CH**

**B85R2T-WS/CH**

**B1025R2T-WS/CH**

**B127RC2T-WS/CH**

**B55R2T-WS/CH**

**B7R2T-WS/CH**

### Infinity™ Bowls

**B265069-WS/CH**

**B264105-WS/CH**

**B267065-WS/CH**

Round Plate, 6¼"

Round Plate, 8½"

Round Plate, 10¼"

Rectangular Platter, 12" x 7"

Round Bowl, 22 oz, 5½"

Round Bowl, 26 oz, 7"

Rectangular Bowl, 19 oz

Rectangular Bowl, 72 oz

Square Bowl, 31 oz



## MOROCCO™ MELAMINE DINNERWARE

**ORGANIC SHAPES** and accents of color add exciting elements of flair to your table.

- Available in Sunburn Terra Cotta w/Speckle, Eggshell w/Speckle, Dark Gray w/Speckle or Vanilla



**B182080**

**B182106**

**B183140**

**B181170**

**B275076**

Round Plate, 8"

Round Plate, 10¾"

Round Plate, 14"

Rectangular Plate, 17" x 6¾"

Round Bowl, 35 oz, 7½"



# RITZ® NAPKINS

**FADE-RESISTANT** spun polyester napkins last longer than cotton with no shrinking. Proprietary weaving and finishing process provides a luxurious feel.

- Reusable and machine washable
- Available in White, Silver, Ivory, Stone, Champagne, Flax, Black, Mineral Gray, Plum, Red, Moss and Rain
- Packed 6 dz

**NPKN**

20" x 20"



## POLISHING CLOTHS

Make your tabletop shine. Soft, smooth material designed for polishing delicate pieces. Cleans surfaces without scratching to remove fingerprints and watermarks.

- Machine washable
- Lint-free
- 16" x 16"
- Packed 24 packs of 6 ea



**MFPCWH** For Glassware, White with Blue Trim  
**MFPCGY** For Flatware, Gray with White Trim

## PLACEMATS

Durable, functional and fashionable styles in a variety of colors to suit any décor.

- 13" x 9"
- Reversible
- PVC-coated polyester yarn

Solid		Basketweave	
<b>64801</b>	Charcoal	<b>64905</b>	Tan/Orange/Rust
<b>64803</b>	Green	<b>64901</b>	Tan/Black
<b>64804</b>	Aqua	<b>64903</b>	Gold/Silver/Black
Frame		Grass Cloth	
<b>64908</b>	Tan	<b>64909</b>	Black
		<b>64910</b>	Camel

Other sizes and styles also available



# TABLE LAMPS

## Creating effective, **COMPELLING AMBIENCE**

is the smartest way to turn a good meal or event into a great one!

- Use with SoftLight® Liquid Wax candles



## REGENCY FLATWARE

The simple teardrop-shaped handles reflect a timeless elegance.

- 18/8 stainless steel
- Mirror polish

RE-101	Teaspoon
RE-102	Bouillon Spoon
RE-110	Tablespoon, Extra Heavy
RE-100	Demitasse Spoon
RE-105	Dinner Fork
RE-106	Salad Fork
RE-108	Dinner Knife
RE-109	Butter Knife, Extra Heavy



## MARQUIS FLATWARE

The exceptional quality and balance of this flatware is highlighted with a pretty, plume-like design on the handle.

- 18/8 stainless steel
- Mirror polish

MA-201	Teaspoon
MA-202	Bouillon Spoon
MA-203	Dessert Spoon
MA-205	Dinner Fork
MA-206	Salad Fork
MA-208	Dinner Knife





Helix - 3½"h, 8/10/12 hr\*

**80553** Clear

**80554** Whisper

**80555** Red

Charm - 3½"h, 8/10/12 hr\*

**80561** Frost

**80563** Red

Cymbal - 4"h, 8/10/12/15/18 hr\*

**80549** Frost

**80550** Amber

Siren - 4½"h, 15/18/24/30 hr\*

**80557** Frost

**80558** Smoke

**80559** Red

**80560** Gold

Origin - 5½"h, 8/10/12 hr\*

**80572** Clear

**80573** Frosted

Penny - 5½"h, 36/50 hr\*

**80564** Black

**80565** Black LX

**80566** Copper

**80567** Copper LX

**80568** Silver

**80569** Silver LX

\* Fits these SoftLight® Liquid Wax Candles



HELIX



CHARM



CYMBAL



SIREN



ORIGIN



PENNY



PENNY LX

Other sizes and styles also available



## ALLURE CANDLE

**REAL FLAME** in a no-mess candle.

Allure is a durable plastic cover designed to look like a traditional wax candle while covering a 24- or 30-hour SoftLight® Liquid Wax candle.

- Candle Kit includes glass hurricane and lamp cover and base

**80574**

Allure Kit

**80575**

Lamp Cover and Base

**80511**

Glass Hurricane Only

## NEXIS® FLAMELESS RECHARGEABLE SET

The most advanced commercial LED candle system available. The charging tray holds twice as many candles in the same amount of space as previous models, while the bevel-top candles provide a greater range of light.

- Magnetic candles and remote control
- More realistic flicker and authentic glow



<b>HFRX10</b>	Candles, 1½" x 2½"	Pk
<b>HFRX40</b>	Flameless Rechargeable System: (40) Candles, Charging Tray, Magnetic Cord & Power Supply, Magnetic Remote Control	10 ea 1 set
<b>HFRXKIT</b>	Tray Kit, Charging Tray: Magnetic Cord & Power Supply, Magnetic Remote Control	1 set



## REAL WAX LED FLAMELESS PILLAR CANDLES

Have the look of real burning wax candle without the melted wax mess.

- Remote-operated timer sets at 6, 8 or 10 hours
- Unscented
- Ivory
- Packed 4 ea

<b>HFWP34RT-A</b>	3" dia x 4½"h
<b>HFWP36RT-A</b>	3" dia x 6"h
<b>HFWP38RT-A</b>	3" dia x 8"h



## DISPOSABLE FUEL CELLS

Day or night, candlelight makes any setting more intimate and magical. Disposable cells are simple to use and labor saving.

- Create safe and easy ambience with a liquid fuel cell on your table
- High Light cells offer more than 3x the light output

		PK
<b>HD8-180</b>	8 hour, 1½" dia x 1⅞"h	180/cs
<b>HD12-144</b>	12 hour, 2" dia x 1⅞"h	144/cs
<b>HD15</b>	15 hour, 1¾" dia x 1¾"h	96/cs
<b>HD17</b>	17 hour, 2" dia x 2 ¼"h	48/cs
<b>HD36</b>	36 hour, 2⅝" dia x 2⅜"h	24/cs
<b>HD42</b>	42 hour, 2⅝" dia x 3⅝"h	36/cs
<b>HD50</b>	50 hour, 2⅝" dia x 3⅝"h	48/cs
High Light		
<b>HD2618HL</b>	18 hour, 2" dia x 2¼"h	60/cs
<b>HD3622HL</b>	22 hour, 2⅝" dia x 2⅜"h	24/cs
<b>HD4226HL</b>	26 hour, 2⅝" dia x 3⅝"h	36/cs



# SELECT WAX® SOLID WAX PILLAR CANDLES

Round, solid wax pillar candles create an **AESTHETIC TUNNELING** effect while burning and minimizing drips.

- Ivory
- Packed 1 dz

**P2.5W-36**  
**P3X31-12**  
**P3X61-12**  
**P3X91-12**

2½" dia x 3"h  
3" dia x 3"h  
3" dia x 6"h  
3" dia x 9"h

Also available in White  
and Cappuccino



## CATERLITES™

These incredibly practical disposable solid wax candles are ideal for caterers, banquets and even intimate tables for two.

- Clear glass
- Packed 4 dz

**CL530-48**  
**CL830-48**

5 hour Burn Time  
8 hour Burn Time

5 hour Frosted glass CaterLites™ also available

## METAL & GLASS TABLE LAMPS

Create a warm, inviting atmosphere for your customers. Tabletop lighting is the most cost effective way to change your restaurant décor and give it a fresh, new look.



CONTOUR™  
AURA



CHIME™



CONTOUR™

SUSSEX™



MONARCH™



LAREDO™



TYPHOON™



CHANTILLY™



WEATHERED  
ANTIQUE BLACK







## BARFLY® MIXOLOGY GEAR

### **ALL THE TOOLS**

you need to keep up with the current state of mixology. Designed to deliver optimal appearance, temperature, consistency and proportion in every glass.

  
**BARFLY®**  
— MIXOLOGY GEAR —



## MEASURED BAR SPOONS

### USE BEHIND

the bar to conveniently measure small volume ingredients with precision. Optimal length is easy to work with, whether pouring from bottles or scooping dry ingredients.



- Measurements etched on top of handle for easy identification
- Bowls designed for easy pouring
- Vintage finish

<b>M37040</b>	½ tsp, 6" long
<b>M37041</b>	1 tsp, 6½" long
<b>M37042</b>	1½ tsp, 7⅞" long
<b>M37043</b>	2 tsp, 7⅞" long
<b>M37044</b>	1 Tbsp, 8½" long
<b>M37075</b>	5 Spoons w/Storage Ring



### Stainless Steel Straws

A permanent, effective solution to plastic straws. Rolled top edge for a more comfortable sipping experience.

- Durable, 18/8 stainless steel
- Seamless construction for better sanitation



#### Straight

<b>M37114</b>	¼" dia, 6½" long
<b>M37116</b>	⅝" dia, 6½" long
<b>M37110</b>	¼" dia, 8½" long
<b>M37112</b>	⅝" dia, 8½" long
<b>Angled</b>	
<b>M37115</b>	¼" dia, 6½" long
<b>M37117</b>	⅝" dia, 6½" long
<b>M37111</b>	¼" dia, 8½" long
<b>M37113</b>	⅝" dia, 8½" long

Cleaning brush also available

- Stainless steel finish
- Also available in Gold Plated (GD), Copper Plated (CP), Antique Copper (ACP), Vintage (VN) or Black (BK) finishes

<b>M37038</b>	Heavy Weight 3-Piece Shaker Set, 18 oz
<b>M37026</b>	Heavy-Duty Spring Bar Strainer, 6" long
<b>M37006</b>	Heavy-Duty Straight Rim Bell Jigger, 1 x 2 oz
<b>M37010</b>	Japanese Style Bar Spoon, 13⅜" long





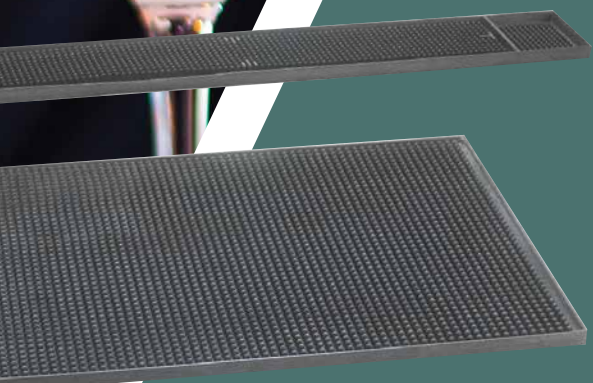
## DOUBLE JIGGERS

When consistency counts, use a jigger for the perfect pour. A standard for every bar, jiggers ensure your signature drinks will always taste the same. NSF.

- Stainless steel
- Rolled edge

<b>JIG-01-P</b>	1 oz & ½ oz
<b>JIG-02-P</b>	¾ oz & 1¼ oz
<b>JIG-03-P</b>	¾ oz & 1½ oz
<b>JIG-04-P</b>	1 oz & 1½ oz
<b>JIG-06-P</b>	1 oz & 2 oz
<b>JIG-08-P</b>	7⁄8 oz & 1¼ oz

Other sizes and styles also available



## BAR MATS

Molded-in pattern provides a sure grip for wet glasses. Rail Mat features an inset for jigger storage.

- Flexible black rubber

<b>BARM-02</b>	Rail Mat, 3¼" x 27"
<b>BARM-04</b>	Service Mat, 12" x 18"



## GLASS RIMMER

Quickly and easily prepare glasses for a variety of cocktails with this 3-tier rimmer for lime juice, sugar and salt.

- Plastic
- Includes sponge

<b>GR-01</b>	6½" w x 7⅞" l x 3"d
--------------	---------------------



# BARWARE ACCESSORIES

**SHAKE UP** the bar and stir excitement with these cocktail essentials.

- High-polished
- 3-piece shakers include shaker, strainer and jigger

Copper-Plated

**CSJ5134COP**

**CSJ5135COP**

**CS100COP**

**J197COP**

**SP511COP**

Stainless Steel

**CSJ5134**

**CSJ5133**

**CSJ5136B**

3-Piece Shaker, 8 oz

3-Piece Shaker, 16 oz

Shaker, 28 oz

Jigger, 30 ml/60 ml

Spoon w/Muddler, 11" long

3-Piece Cocktail Shaker, 8 oz

3-Piece Cocktail Shaker, 12 oz

3-Piece Cocktail Shaker,

Brushed, 24 oz

**Co-Rect®**  
Products  
A CROWN BRANDS COMPANY

# POURERS

**KEEP THE DRINKS** flowing with a variety of pourers in metal or plastic. Measured pourers ensure the perfect pour.

- Packed 1 dz

Econo Pourers

**EP0214** Red Base w/Black Collar, 1 oz

**EP0217** Yellow Base w/Black Collar, 1½ oz

Free Pourers

**OP0304** Sparkle Red

**OP0316** Black

370 Series Free Pourers

**OP0370** Chrome Plated Spout w/No Collar

**OP0371** Chrome Plated Spout w/Black Collar

**OP0373** Clear Spout w/Black Collar

**Co-Rect®**  
Products  
A CROWN BRANDS COMPANY



### CAMTREAD® TRAYS

Bring unmatched elegance and durability to your banquets or fine catering experience. Ensure your drinks and meals are securely delivered, time and time again. NSF.

- Durable fiberglass tray with a molded-in non-skid surface
- Available in Black Satin and Tavern Tan



**CAMBRO**  
TRUSTED FOR GENERATIONS™

#### Rectangular

<b>1014CT</b>	10 <sup>5</sup> / <sub>8</sub> " x 13 <sup>3</sup> / <sub>4</sub> "
<b>1216CT</b>	12" x 16 <sup>5</sup> / <sub>8</sub> "
<b>3253CT</b>	12 <sup>3</sup> / <sub>4</sub> " x 20 <sup>7</sup> / <sub>8</sub> "
<b>1418CT</b>	14" x 18"
<b>1520CT</b>	15" x 20 <sup>1</sup> / <sub>4</sub> "
<b>1622CT</b>	16" x 22"
<b>1826CT</b>	17 <sup>13</sup> / <sub>16</sub> " x 25 <sup>1</sup> / <sub>16</sub> "

#### Round

<b>900CT</b>	9" dia
<b>1100CT</b>	11" dia
<b>1400CT</b>	14" dia
<b>1550CT</b>	16" dia, Low Profile
<b>1600CT</b>	16" dia
<b>1800CT</b>	18" dia
<b>1950CT</b>	19 <sup>1</sup> / <sub>16</sub> " dia, Low Profile

#### Oval

<b>2500CT</b>	19 <sup>1</sup> / <sub>4</sub> " x 23 <sup>1</sup> / <sub>8</sub> "
<b>2700CT</b>	22" x 26 <sup>7</sup> / <sub>8</sub> "
<b>2900CT</b>	28 <sup>7</sup> / <sub>8</sub> " x 23 <sup>1</sup> / <sub>2</sub> "

## CAMVIEW® PITCHERS

**CAMVIEW® PITCHERS** are lightweight, making them easy for staff to carry around. These durable pitchers are designed with an exclusive ice-control contoured lip and pour spout to reduce spills.

- Made of shatter-resistant material
- Clear

<b>P320CW135</b>	32 oz
<b>PC34CW135</b>	34 oz
<b>P480CW135</b>	47 oz
<b>P600CW135</b>	60 oz, BPA-Free
<b>PE600CW135</b>	60 oz, Economy
<b>PL60CW135</b>	60 oz, Laguna®
<b>PC64CW135</b>	64 oz
<b>P34LCW135</b>	Lid for P34CW

Also available in other styles and sizes

**CAMBRO**  
TRUSTED FOR GENERATIONS™

## NEWPORT TUMBLERS

### IDEAL FOR CASUAL

dining, outdoor events or poolside.  
Impact resistant SAN plastic  
resists chips and breaks.

- Fluted design
- Stacking lugs prevents sticking
- Available in Clear, Amber and Slate Blue

**CAMBRO**  
TRUSTED FOR GENERATIONS™





# BEVERAGE DISPENSERS

**SERVE YOUR** chilled or infused beverages in style.

- Brushed stainless steel lid and base
- BPA free Tritan™ reservoir
- Removable infuser and center ice core

<b>7515</b>	1¼ gal
<b>75</b>	2½ gal
<b>85</b>	5 gal



## TIERED CRATE DISPLAY STAND

Perfect for breakfast buffet grab-and-go stations or merchandising. Use with the Acacia Crates alone, or use with food pans for chilled items.

- Black powder-coated metal
- Adjustable shelves display product flat or at an angle
- Crates fit food boxes up to 6"d

<b>11000</b>	Display Stand, 21½"w x 13½"d x 22¼"h
<b>300100</b>	Acacia Crate, Full Size
<b>300101</b>	Acacia Crate, Half Size





## SIERRA COLLECTION™ SERVING BOWLS

These large portion oval bowls are perfect for serving salads and pasta.

- Durable, lightweight melamine
- Available in three sizes

<b>1025002</b>	96 oz
<b>1025102</b>	144 oz
<b>1025202</b>	208 oz



## BARNWOOD COLLECTION™ SERVINGWARE

Enhance the casual dining experience with this serving collection ideal for rustic buffets, farm-to-table restaurants or poolside service.

- Durable, lightweight melamine
- Reclaimed wood pattern



<b>10020</b>	Square Platter, 5½" x 5¾"
<b>10021</b>	Square Platter, 10" x 9¾"
<b>10022</b>	Square Platter, 11¾" x 11½"
<b>10023</b>	Square Platter, 15" x 14½"
<b>10018</b>	Rectangular Tray, 10" x 7¾"
<b>10019</b>	Rectangular Tray, 11" x 5¾"
<b>10016</b>	Round Paddle, 12½" dia, 16½" with Handle
<b>10017</b>	Rectangular Paddle, 8" x 10", 12" with Handle



## TIERED BUFFET STANDS

Give your next buffet a huge wow factor with these stunning new stands. In colors and shapes designed to impress, there's no better way to elevate bite-sized hors d'oeuvres and desserts to the level of luxury.

- Gold steel frame
- Features a convenient carrying handle
- Built-in frosted glass plates

**SRG3** Oval, 3-Tier, 12"l x 7"w x 20½"h  
**SRG4** Round, 4-Tier, 21½"l x 6¾"w x 21¾"h



## HAMMERED BEVERAGE TRAY & TUBS

Add a bit of charm to any occasion, from your next brunch buffet to private table service for two.

- Aluminum construction
- Gold finish

**ATHG16** Tray, 16" dia x 2¾"h  
**ATHG9** Tub, 9"w x 12¼"l x 8¾"h, 7¼ qt  
**ATHG10** Tub, 10¾"w x 15"l x 7¼"h, 10 qt  
**ATHG14** Tub, 14"w x 19"l x 8¼"h, 16¼ qt

## VINTAGE HAMMERED BUFFETWARE

Classically-inspired buffetware glimmers in the light to provide a gilded touch to your buffet.

- 18/0 stainless steel with vintage gold finish
- Dishwasher-safe vibrant color

**GVHT1** Serving Tongs, 9"  
**GVHT2** Serving Tongs, 11¾"  
**GVHP** Pie Server, 12¼"  
**GVHF** Cold Meat Fork, 13"  
**GVHSS** Slotted Spoon, 13¼"  
**GVHSP** Solid Spoon, 13¼"  
**GVHML** Ladle, 11½", 1½ oz  
**GVHL** Ladle, 13", 3½ oz







## ACACIA WOOD & STONE SERVING BOARDS

### THESE UNIQUE BOARDS

are made from a combination of Acacia wood and polished natural stone. Ideal for serving charcuterie, cheese, appetizers and countless other items.

- Wood is carbonized to help reduce water absorption

#### Acacia/Marble

**A5100025**

Round Board, Black, 9 $\frac{1}{8}$ "

**A5100030**

Round Board, White, 11 $\frac{1}{4}$ "

**A5100056**

Rectangular Paddle,  
White, 7 $\frac{1}{8}$ " x 22"

#### Acacia/Granite

**A5100044**

Rectangular Paddle,  
Black and White, 7 $\frac{1}{8}$ " x 17 $\frac{3}{8}$ "



**PADERNO**  
WORLD CUISINE

## LAZY SUSANS

**IDEAL FOR SERVING** multiple dishes, condiments, desserts, appetizers and much more. Each piece features unique veining or speckling with a glossy finish. Perfect for the table or the counter.

- Natural stone with sturdy aluminum base

**A5100035**

White Marble, 13 $\frac{3}{4}$ "

**A5101135**

Black Marble, 13 $\frac{3}{4}$ "

**A5100040**

Black & White Granite, 15 $\frac{5}{8}$ "



**PADERNO**  
WORLD CUISINE

## GRANADA COLLECTION

A uniquely and classy display collection featuring accents of Spanish-style plastic tiles in black and white.

- The grilltop on the Chafer Alternative provides a perfect surface to evenly distribute heat
- Each drawer on the Bread Display is removable for cleaning
- Risers have powder-coated steel tops

<b>4031-3-85</b>	3-Jar Display, 13"w x 5"d x 4¼"h
<b>4031-6-85</b>	6-Jar Display, 13"w x 9¼"d x 4¼"h
<b>4016-85</b>	Chafer w/ Cover, 22"w x 14"d x 12¼"h
<b>4020-85</b>	Chafer Alternative, 10¼" w x 10"d x 5½"h
<b>4021-85</b>	Chafer Alternative, 19¾"w x 10"d x 5½"h
<b>4029-3-85</b>	Square Riser, 12½" sq x 4"h
<b>4029-6-85</b>	Square Riser, 12½" sq x 6"h
<b>4029-9-85</b>	Square Riser, 12½" sq x 9"h
<b>4030-3-85</b>	Rectangular Riser, 20½"w x 7½" x 4¼"h
<b>4030-7-85</b>	Rectangular Riser, 20½"w x 7½" x 7¼"h
<b>4030-11-85</b>	Rectangular Riser, 20½"w x 7½" x 11¼"h
<b>4022-85</b>	3-Tier Bread Display, 6¾"w x 14¾"d x 20½"h



**CAL·MIL**

## PORTLAND COLLECTION

Combine style and function with this display collection featuring durable and attractive black wire for an eye-catching presentation.

- Ice Housings include clear pans
- Risers have powder-coated steel tops
- Revolving Cup and Lid Organizer fits cups and lids up to 3¾" dia



**CAL·MIL**



<b>41115-6-13</b>	Ice Housing, 6½"w x 7"d x 8½"h
<b>41115-10-13</b>	Ice Housing, 12½"w x 13½"d x 8½"h
<b>41115-12-13</b>	Ice Housing, 21"w x 13½"d x 8½"h
<b>4104-13</b>	Revolving Cup and Lid Organizer, 8¾" sq x 17¼"h
<b>432-3-13</b>	Square Riser, 12" sq x 3¼"h
<b>432-6-13</b>	Square Riser, 12" sq x 6"h
<b>432-9-13</b>	Square Riser, 12" sq x 9"h
<b>22012-13</b>	Melamine 3-Jar Display, 15½"w x 4½"d x 6½"h
<b>4105-13</b>	Vertical Cylinder Display, 6¾"w x 7¼"d x 19"h

# CAL·MIL

## MADERA COLLECTION

The Madera Collection is fashioned of rustic pine wood, presenting a fresh, sustainable, one-of-a-kind design.

- Beverage Dispensers include drip tray
- Pastry Drawer is stackable and includes liner
- Napkin Cup, or Lid Organizer fits cups and lids up to 3¾" dia

**1527-3-99**

Ice Chamber Dispenser, 3 gal

**1527-3INF-99**

Infusion Chamber Dispenser, 3 gal

**3473-3-99**

Industrial Riser, 2-Tier, 24"w x 10"d x 12"h

**166-3-99**

Rectangular Riser, 20½"w x 7"d x 3¼"h

**166-7-99**

Rectangular Riser, 20½"w x 7"d x 7"h

**166-11-99**

Rectangular Riser, 20½"w x 7"d x 11"h

**3416**

Pastry Drawer, 22"w x 14½"d x 9¼"h

**298-99**

Napkin, Cup and Lid Organizer, 4½"w x 4½"d x 8½"h



# CAL·MIL

## CINDERWOOD COLLECTION

### ELEGANT, DARK OAK

with stylish geometric cutouts and contrasting chrome accents that draw the eye.

- Beverage Dispensers include drip tray
- Risers feature slots for shelving brackets (sold separately)

**3804-3-87**

Ice Chamber Dispenser, 3 gal

**3804-3INF-87**

Infusion Chamber Dispenser, 3 gal

**3822-6-87**

Marble Riser, 15"w x 11"d x 6¼"h

**3822-9-87**

Marble Riser, 15"w x 11"d x 9¼"h

**3822-13-87**

Marble Riser, 15"w x 11"d x 13¼"h

**3825-23-87**

Cardholder, 3½"w x 2"h

**3825-46-87**

Cardholder, 4"w x 6"h

**3825-811-87**

Cardholder, 8½"w x 11"h





## SOFT SERVE FREEZER

Ideal countertop soft serve/yogurt freezer for operations that want to add frozen treats to their menu.

- Single flavor
- Touch screen with intuitive icons
- Adjustable carb tube for product mixture flexibility

**C111-37** 1.6 gal



## UNCARBONATED FROZEN BEVERAGE DISPENSERS

Mix and serve a variety of frozen beverages that customers crave, from margaritas and coffees to dairy-based options. NSF, cULus.

- 5 gallon capacity
- Extremely quiet operation
- Large-capacity, high volume drink production
- LED-illuminated clear window showcases product
- Lower capacity 115V models also available

### Water-Cooled

<b>D118-18</b>	208-240V
<b>D118-18-L</b>	208-240V, Lit Door
<b>D118-18-L-AF</b>	208-240V, Lit Door, Auto Fill

### Air-Cooled

<b>D118-38</b>	208-240V
<b>D118-38-AF</b>	208-240V, Auto Fill
<b>D118-38-L-AF</b>	208-240V, Lit Door, Auto Fill



## FROZEN BEVERAGE GRANITA DISPENSERS

Chill, freeze, and serve cold and frozen beverages including slushes, milk-based, smoothies, granitas, and frozen cocktails—alcohol can be directly added to the hopper. NSF, cETLus.

- Easy-to-use controls include a granita mode with consistency control or a frozen beverage mode
- Each bowl is independently controlled
- Large freezing surface and properly sized compressor reduces freeze downtimes
- 120V

### 6 Liter

**VCBA118-37**  
**VCBA128-37**  
**VCBA168-37**

### 10 Liter

**VCBF118-37**  
**VCBF128-37**  
**VCBF168-37**

One Bowl  
Two Bowls  
Three Bowls



Stoelting 115V Countertop Frozen Beverage Dispensers also available





## COLD BEVERAGE DISPENSER

**THIS COLD BEVERAGE** dispenser features a BPA free Tritan™ plastic body that offers the appearance of glass and the durability of plastic.

- 18/8 stainless steel
- Available in Brushed Stainless Steel, Rose Gold, Vintage Gold and Dark Tungsten

**CBDRT3** 3 gal

### PARTY TUBS

Cold beverages with no puddle! Double wall construction prevents sweating and keeps your bottles of beer, water or soda chilled.

- 18/8 stainless steel with a brushed finish

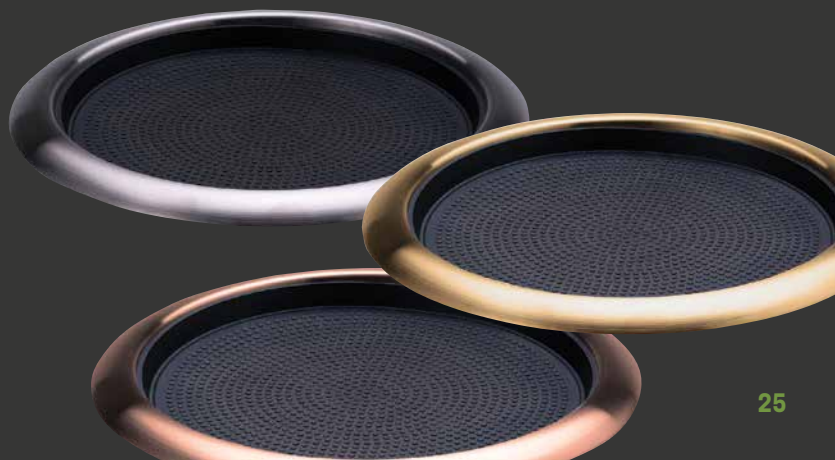
**PT2BS** 2 gal, 9" Opening  
**PT7BS** 7 gal, 14½" Opening

### NON-SLIP TRAY

Up your beverage service game with this attention-grabbing non-slip tray. Removable rubber mat prevents slipping and easily hand washes. Dishwasher safe.

- 18/8 stainless steel
- Available in Brushed Stainless Steel, Rose Gold, Vintage Gold and Dark Tungsten

**TR1412RI** 14" dia OA, 12" dia



# MODULAR ACTION STATIONS & COOLING STATIONS

## Action Stations

**CWACTION6**

Single Butane Station, 14¼" x 26"

**CWACTION5**

Double Butane Station, 14¼" x 55"

**CWACTION7**

Induction Station, 14¼" x 25¼"

## Cooling Stations

**CW40210**

Full Size, 14¾" x 25¼"

**CW40214**

Half Size, 8½" x 25¼"

**CW40212**

Half Long, 14¼" x 12¼"

Butane stoves and food pans sold separately

**ADD MULTIPLE** cooking stations where you need them. Use with coordinating modular cooling stations for even more menu flexibility.

- Butane and Cooling stations include cooling plate(s)
- Induction station includes 1800W single burner induction range with 20 power levels
- Ask about available finish and coating options





## UNDERCOUNTER INDUC'STONE WARMER

Designed for buffet use under natural and engineered stone countertops. Add beauty and function to your buffet line with the discreet undercounter induction warmer.

- Stainless steel casing
- 20 power levels
- Removable grease filter
- 13 $\frac{3}{8}$ "w x 13 $\frac{3}{8}$ "d x 6 $\frac{1}{8}$ "h

**GL650UC** 120V, 650W



## VITROCERAMIC SPEED GRILLS

Virtually smokeless, these grills are ideal for display cooking, banquets and catering. Robust, heavy-duty construction with extra high-power output for faster preheat and cook times.

- 3-position electronic timer
- Vitroceramic cooking plates
- 208/240V

**PANINI-VG** Single, 12" w  
**DIABLO-VG** Double, 25 $\frac{1}{2}$ " w

**EQUIPEx**



## VITROCERAMIC PANINI GRILL

Perfect for out-front display cooking and catering events. Combined radiant and contact heat produces exceptional results.

- Stainless steel body with front grease drawer
- Vitroceramic cooking plates
- Grooved top, smooth bottom plates
- 120V

**PANINI-VC** Single, 16" w

**EQUIPEx**



## DROP-IN INDUCTION WARMERS

A cool concept for buffet and display cooking, these drop-in induction warmers are energy efficient and easy to clean. Superior airflow and cooling fans permit all-day use.

- Stainless steel casing
- Durable 4 mm vitroceramic glass
- 16 $\frac{3}{8}$ "w x 16 $\frac{3}{8}$ "d x 6 $\frac{3}{4}$ "h

**GL650DI** 120V, 650W  
**GL1800DI** 120V, 1800W  
**GL3000DI** 208/240V, 3000W



**ELEGANT STYLING** in 18/8 mirror-polished stainless steel.

- Full roll-top with 90° and 180° stops
- Fully welded frame for durability and long life
- Completely assembled with food pan, water pan, hinged lid and fuel holders

**CDD-3** Full-Size, Rectangular, 9¾ qt  
**CDD-4** Round, 8 qt



**DELUXE II ROLL-TOP CHAFERS**



**CDI-01** ¾ Size, 6 qt  
**CDI-01-S** Stand for CDI-01  
**CDI-02** Round, 6½ qt  
**CDI-02-S** Stand for CDI-02



**INDUCTION CHAFERS**

Modern sophistication, beauty and functionality combine in these glass-top chafers. Use on an induction table or with canned fuel to keep food hot and appetizing.

- Small footprint is great for tight spaces
- Slow-moving cover will hold at any point





## LUNAE BUFFETWARE

Stylish servingware complements any buffet.

- 18/8 stainless steel
- Ergonomic, curved handles

<b>LUN-01</b>	Large Solid Spoon, 13"
<b>LUN-02</b>	Large Notched Spoon, 13"
<b>LUN-03</b>	Small Solid Spoon, 10"
<b>LUN-04</b>	Small Notched Spoon, 10"
<b>LUN-05</b>	Large Serving Tongs, 12"
<b>LUN-06</b>	Medium Serving Tongs, 9½"
<b>LUN-07</b>	Small Serving Tongs, 6"
<b>LUN-08</b>	Large Soup Ladle, 6 oz, 14"
<b>LUN-09</b>	Small Soup Ladle, 1 oz, 10"
<b>LUN-10</b>	Slotted Turner, 14"
<b>LUN-11</b>	Pie Server, 10"
<b>LUN-12</b>	Large Fork, 13"



## GOLD ACCENTED CHAFERS

Create a beautiful buffet setting with a touch of affordable elegance.

- 18/8 stainless steel finish with gold plated legs and handles
- Includes water pan, food pan, fuel holders, dome cover and stand

<b>DC-6N</b>	Rectangular, 8 qt
<b>DC-3</b>	Oval, 6 qt



**update**  
international  
A CROWN BRANDS COMPANY

## ROYAL CHAFER

Elegantly styled with sculpted legs, beautiful wood handles and ornate trim to add beauty to your buffet.

- Stainless steel finish with stained wood handles
- Includes water pan, food pan, fuel holders, dome cover and stand

<b>RC-20</b>	Rectangular, 8 qt
--------------	-------------------





# SPEEDHEAT™ FLAMELESS FOOD WARMING SYSTEM

70332  
70338  
70346  
70334  
70354  
70362

Double Half Size Pan Kit  
Half Size Pan Kit  
Third Size Pan Kit  
Double Half Size Pan Refill  
Third Size Pan Refill  
SpeedHeat® HD Kit

**PROVIDE HEAT** in less than 60 seconds with this instant, flameless food warming system. No open flame—makes drop-off catering safer, simpler and faster.

- Trays are #5 recyclable polypropylene
- Kits include 8 bases, 8 trays, and warming packets for each tray
- SpeedHeat® HD kit includes 4 bases, 4 trays, 8 steam stoppers and 8 warming packets



## COOLER CART

Keeps drinks chilled for any event. Hinged lid opens on both sides for easy access.

- Features a removable stainless steel bottle opener, cap catcher and drain plug
- 65 qt

**CC-65B**

31½"l x 15¾"w x 32¾"h



## BUS CART

Stainless steel cart makes clean-up quick and easy. Bumpers on handle and cart front protect against damage and the locking casters keep cart securely in place.

- 3 shelves
- 300 lb capacity

**BC-2415SS**

27½"l x 16¼"w x 32½"h



## FOLDING BUS CART

This heavy-duty stainless steel and polymer cart folds to a narrow 8" width for easy storage. The top shelf features ergonomic plastic filigree handles.

- 350 lb capacity
- 3 shelves
- Integrated lock for secure closing

**FBC2819B**

28"l x 19"w x 36"h

# TriMark®

Foodservice Equipment, Supplies and Design

[www.rwsmithco.com](http://www.rwsmithco.com)

Allow 2-4 weeks delivery on special order items.

Every effort has been made to verify the accuracy of all data contained in this publication, however, we cannot assume responsibility for errors or omissions.

**SAN DIEGO**  
10101 Old Grove Rd  
San Diego, CA 92131  
858-530-1800

**ORANGE COUNTY**  
210 Commerce  
Irvine, CA 92602  
949-474-1000

**AUSTIN**  
800-942-1101

**DALLAS**  
972-732-1722

**FT LAUDERDALE**  
954-202-9606

**HOUSTON**  
281-498-3335

**LOS ANGELES**  
323-291-0848

**MIAMI**  
305-485-8800

**ORLANDO**  
407-859-0601

**ALL OTHER AREAS**  
Toll Free 800-942-1101

**PALM SPRINGS**  
760-340-2424

**PHOENIX**  
602-528-3485

**SACRAMENTO**  
916-551-1458

**SAN FRANCISCO**  
415-391-8641

**TUCSON**  
520-742-6108



AFOH201908



## Featuring These Top Brands

ABC  
American Metalcraft  
Barfly Mixology Gear  
Cal-Mil

Cambro  
Crown Brands  
Elite Global Solutions  
Equipex

Hollowick  
John Ritzenthaler Company  
Libbey  
Rosenthal Sambonet USA

Service Ideas  
Sterno Products  
TableCraft  
Vollrath