
NEW

Featuring the newest products
from the industry's top manufacturers

2018
VOLUME 5

 **TriMark**[®]
Foodservice Equipment, Supplies and Design

TABLE OF CONTENTS

ABC	27		
American Metalcraft	6-7		
Arc Cardinal	4		
BarFly	10-11		
Cal-Mil	15		
Cambro	22-23		
Chef Revival	21		
Elite Global Solutions	8		
Equipex	31		
Hamilton Beach	30	Rubbermaid Commercial Products	24
Hollowick	13	Snap Drape Brands	14
Intermetro	34	Spring USA	17
John Ritzenthaler Company	26	Stoelting	20
Lakeside	35	T&S Brass	33
Libbey	3	Tablecraft	12
Mercer Culinary	28-29	Taylor Precision Products	25
Nemco	32	Vollrath	18-19
Rosenthal Sambonet USA	9	Walco	5, 16



Elevate the wow in every craft cocktail.

1924 Cocktails Series

The new 1924 Libbey Vintage stemware range fuses jazz-age flair with exciting new cocktail trends. Each glass features a distinctive stem, embossed foot and an original bowl design that gracefully extends to the elegant rim.

- Safedge® Rim Lifetime Guarantee
- Enhances the taste experience
- Pk 1 dz



LIBBEY

- 502008** 20¼ oz Gin & Tonic
- 501407** 8¼ oz Coupe
- 503005** 8½ oz Wine/Cocktail

Arcoroc Urbane Glassware

Long profile designs with slight curves and sturdy bottoms for increased durability at the bar. Built with a stackable ledge for space-saving storage.

- ArmoRim High Rim Resistance
- Stackable
- Pk 1 dz

N0530	Rocks, 7 oz
N0512	Rocks, 10 oz
N0513	Hi Ball, 10 oz
N0524	Double Old Fashioned, 12 oz
N0527	Double Old Fashioned, 14 oz
N0528	Beverage, 14 oz
N0520	Cooler, 16 oz
N0529	Whiskey/Shot, 3½ oz



Arcoroc Triborough Glassware

Paneled designs brilliantly reflect light and provide excellent grip support and texture. Wide rims help reduce cocktail spillage, while increasing garnish and ice cube space.

- ArmoRim High Rim Resistance
- Stackable

		Pk
N0237	Rocks, 8 oz	3 dz
N0229	Rocks, 10 oz	3 dz
N0235	Hi Ball, 12 oz	3 dz
N0228	Double Old Fashioned, 12 oz	3 dz
N0236	Double Old Fashioned, 14 oz	3 dz
N0239	Cooler, 14 oz	2 dz
N0230	Cooler, 16 oz	2 dz
N0233	Cooler, 20 oz	2 dz



Arcoroc Skyscraper Glassware

Sleek and ready for its social media close up. Heavy, gently tapered bases with smooth sides show off every ounce.

- ArmoRim High Rim Resistance
- Pk 1 dz

N0388	Rocks, 7 oz
N0392	Rocks, 9 oz
N0391	Hi Ball, 10 oz
N0420	Double Old Fashioned, 12 oz
N0487	Beverage, 12 oz
N0493	Beverage, 14 oz
N0504	Cooler, 16 oz
N0508	Cooler, 20 oz



Adorn your tabletop in stylish elegance with the newest designs in flatware.



Alps Flatware

A balanced and seamless modern design.

- 18/0 stainless steel
- Pk 1 dz

4801	Teaspoon
4807	Dessert Spoon
4803	Serving Spoon
48051	Euro Fork
4806	Salad Fork
4811	Butter Knife
4845	Knife, 1-Pc
48451	Euro Knife



Mastaba Flatware

Sleek tapered handles with contemporary style.

- 18/10 stainless steel
- Pk 1 dz

MAS01	Teaspoon
MAS07	Dessert Spoon
MAS03	Serving Spoon
MAS05	Dinner Fork
MAS051	Table Fork
MAS06	Salad Fork
MAS45	Dinner Knife
MAS451	Table Knife



Fieldstone™ Lancer™ Flatware

Teardrop-shaped handles enhanced with Fieldstone burnished finish.

- 18/10 stainless steel
- Pk 1 dz

9401FS	Teaspoon
9407FS	Dessert Spoon
9403FS	Serving Spoon
9405FS	Dinner Fork
94051FS	Euro Fork
9406FS	Salad Fork
9445FS	Knife, 1-Pc
94451FS	Euro Knife, S.H.



Crave Dinnerware

Artisanal-designed melamine that captures the look and feel of china at a fraction of the cost. Each piece features organic edges to add a naturally inspired look to your tabletop. NSF.

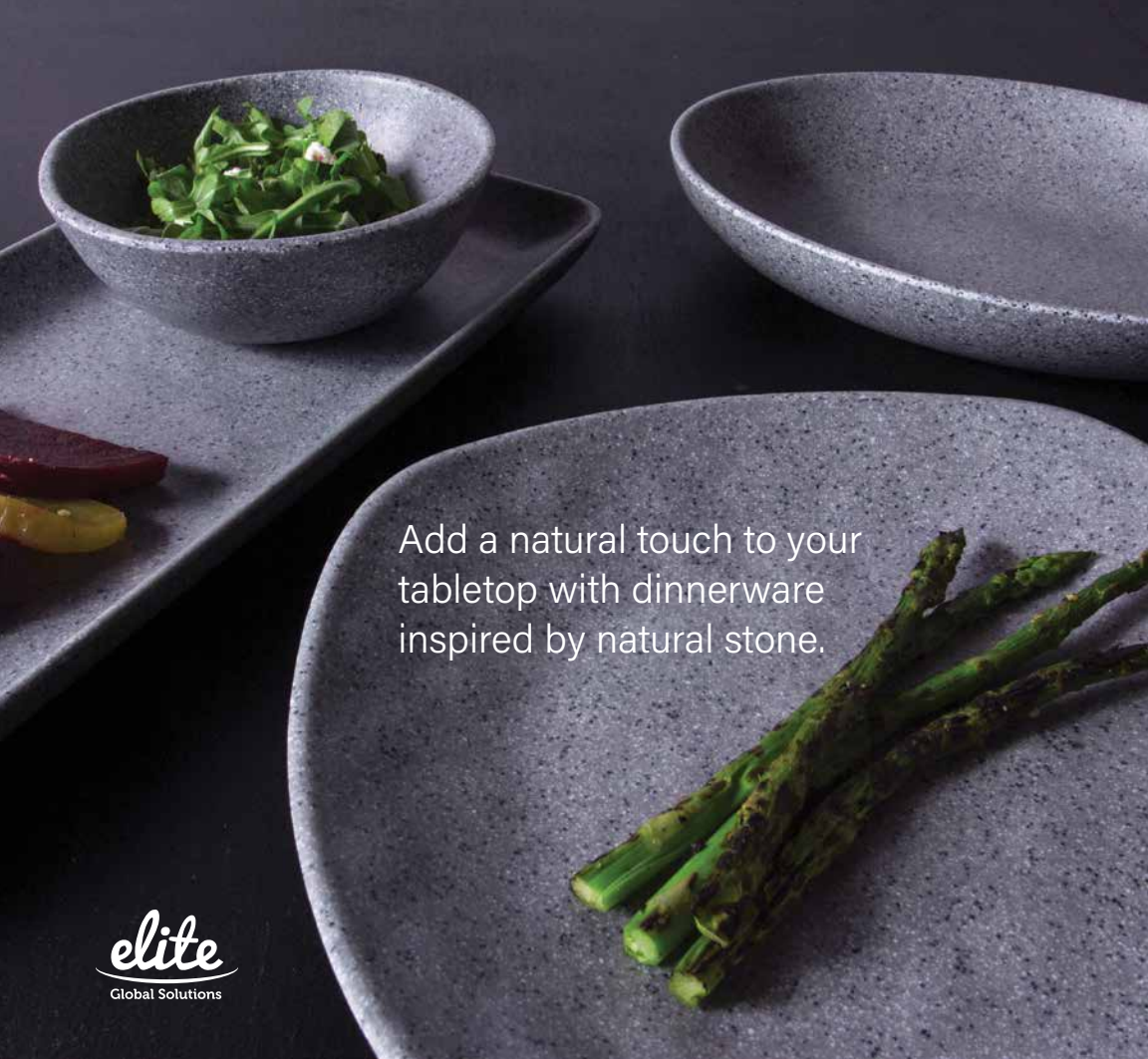
- Nearly indestructible
- BPA free
- Available in Cloud White (CL) or Shadow Gray (SH)

CP6	Coupe B&B Plate, 6½"
CP7	Coupe Plate, 7½"
CP9	Coupe Plate, 9"
CP10	Coupe Plate, 11½"
CBL4	Fruit Bowl, 4½ oz, 4"
CBL12	Nappy Bowl, 12 oz, 5¾"
CBL16	Soup/Salad Bowl, 16 oz, 5¾"
CBC7	Bouillon Cup, 7 oz, 4"



Pair Crave with a variety of materials for an on-trend tabletop every time.





Add a natural touch to your tabletop with dinnerware inspired by natural stone.



Tenaya Dinnerware

Naturally inspired with soft edges and earth-tone colors, offering a rustic, organic appeal. Available in a variety of shapes and sizes to offer unique presentations.

- Break-resistant melamine
- Available in Granite Stone (GS) & Off White (OW)
- Pk 6 ea

- RT6R** Round Plate, 6" dia
- RT8R** Round Plate, 8" dia
- RT10R** Round Plate, 10" dia
- RT107OV** Deep Oval Plate, 10" x 7", 32 oz
- RT8SQ** Square Plate w/Rounded Edges, 8" sq
- RT10SQ** Square Plate w/Rounded Edges, 10" sq
- RT146RC** Rectangular Plate, 14½" x 6½"
- RT12R** Round Platter, 12" dia
- RT62R** Round Bowl, 16 oz, 6" dia
- RT83R** Round Bowl, 44 oz, 8" dia





sambonet

Joyn Dinnerware

Elevate the look of your table with Joyn dinnerware. Offering a modern, urban style that brings a casual, cozy ambiance, this fine porcelain collection moves from oven to table with ease.

- Double-fired porcelain
- Oven, microwave, freezer and dishwasher safe
- Gray, also available in Rosé and White

44020-640202-10353	Deep Plate, 9"
44020-640202-10860	Salad Plate, 8"
44020-640202-10867	Dinner Plate, 10 $\frac{5}{8}$ "
44020-640202-15298	Tray, 12 $\frac{1}{2}$ "
44020-640202-15428	Bowl, 6 $\frac{3}{4}$ oz, 3"
44020-640202-15216	Cereal Bowl, 28 oz, 6 $\frac{1}{4}$ "
44020-640202-14470	Jug/Creamer, 13 $\frac{1}{2}$ oz
44020-640202-15505	Mug w/Handle, 14 oz





Barfly[®] Mixology Gear

All the tools you need to keep up with the current state of mixology. Designed to deliver optimal appearance, temperature, consistency and proportion in every glass. Ask about additional items.

- Stainless steel
- Most items also available in Gold Plated (GD), Copper Plated (CP) or Black (BK) finishes



Stainless Steel



Copper Plated



Gold Plated



Black

- M37012** Classic Bar Spoon, 11¹/₁₆"
- M37018** Bar Spoon w/Muddler End, 11¹³/₁₆"
- M37010** Japanese Style Bar Spoon, 13¹⁹/₁₆"
- M37005** Japanese Style Jigger, 1 x 2 oz
- M37006** HD Straight Rim Bell Jigger, 1 x 2 oz
- M37026** HD Spring Bar Strainer, 6"
- M37028** Julep Strainer, 6¹/₂"
- M37007** Bar Shaker, 18 oz
- M37008** Bar Shaker, 28 oz
- M37038** 3 Piece HD Cocktail Shaker Set, 17 oz
- M37009** Cocktail Shaker Set, w/18 oz & 28 oz Shaker

Other styles also available.



Barfly® Mixology
Gear—tools for the
professional committed
to the art of the cocktail.


BARFLY®
—MIXOLOGY GEAR—

Better Burger Collection™

This unique collection reimagines traditional "fast-food" serving pieces in elegant stainless steel or durable, lightweight melamine.

- Spatulas feature a unique faux wood handle
- Most items available in stainless steel or white melamine

Spatula Service

- 20000** Spatula Server, 9½" x 4" x 2½"
- 20001** Spatula Slider Flight, 16" x 3½" x 2⅝"
- 20002** Spatula Drink Flight, 16" x 3½" x 3¼"

Trays

- 20004** Large Serving Tray, 14" x 10" x ½", Stainless Steel
- 20009** Large Fry Tray, 7½" x 5 x 1⅞", Stainless Steel
- 20029W** Large Fry Tray, 7⅝" x 4⅞" x 1¾", White

Serving Boxes

- 20007** Large Fry Box, 4⅞" x 2½" x 5¼", Stainless Steel
- 20027W** Large Fry Box, 4⅞" x 2⅞" x 5", White
- 20003** Burger Box, Stainless Steel
- 20025W** Burger Box, 12" x 6" x 1½", White

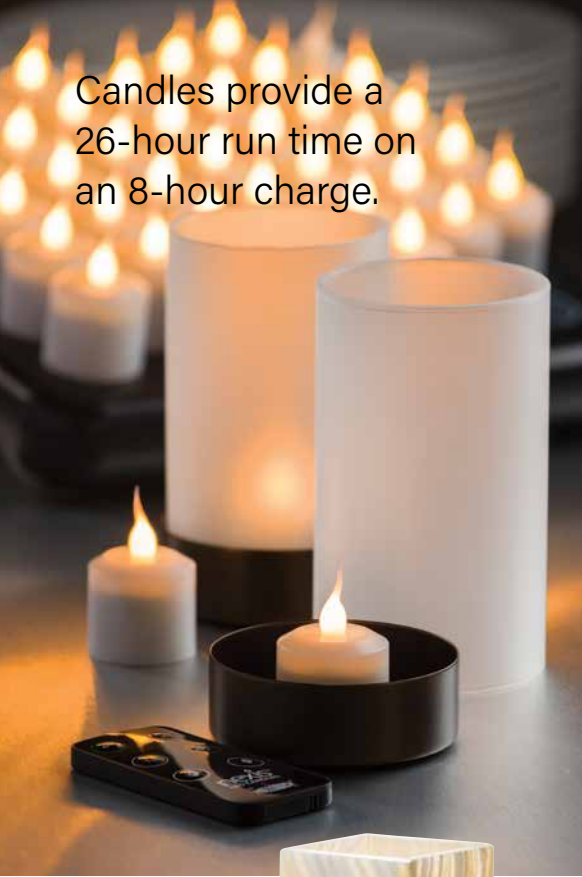
Serving Cups

- 20031W** Cup, 16 oz, 3.68" x 3.68" x 5.18", White

Other styles also available.



Candles provide a 26-hour run time on an 8-hour charge.

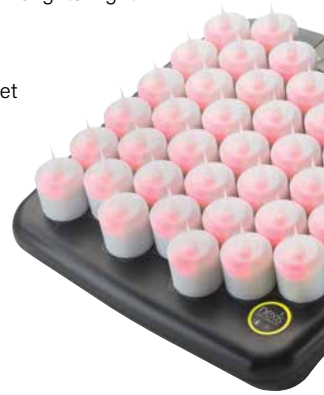


Nexis™ Wireless Rechargeable LED Candle Set

Advanced wireless technology in a sleek, compact system. Magnetic tray and candles allow you to simply swipe candles over tray to change modes. Included magnetic remote secures to tray or most metal surfaces for easy-access. "Quick-click" connect magnetic cord and power supply also included.

- Candles glow red when charging, green when fully charged
- True-candlelight LED color with a realistic flicker
- High light mode for 2x brighter light

HFRX40 40 Candle Set



Luxor™ Solid Alabaster Lamps

Customers will appreciate these luxurious lamps that provide the perfect ambiance. The natural variations reflect beautifully on the tabletop.

- Use with Hollowick's disposable fuel cells

Use w/HD8 Fuel Cells

8208EA Tealight, 3 $\frac{3}{8}$ "h x 2 $\frac{3}{8}$ " dia

Use w/HD12, HD17 or HD26 Fuel Cells

8217EA Mid-Size, 5"h x 2 $\frac{3}{4}$ " dia

Use w/HD17, HD26 or HD36 Fuel Cells

8236EA Large, 6 $\frac{5}{8}$ "h x 3 $\frac{1}{8}$ " dia



V12™ Rechargeable LED Candle Set

Naturally flickering Amber LED lights with base that features a convenient USB charging connection. Get up to 14 hours run time on a 10-hour charge. Candles have simple push-button on/off bottom switches.

- USB power adapter included
- Multiple trays can be charged at one time on any multi-port USB hub

HFRV12-A 12 Candle Set

European-inspired linens that are soft & absorbent.



Stone Birdseye



Stone Birdseye Banded



Cream Satin Band



Cream Classic Linen

Milan Collection

The look and feel of cotton linens with polyester characteristics. No linting, fading or shrinking even after 100+ washings.

- Available in White (WHT), Cream (CRM), Stone (STN) and Black (BLK)
- Pk 1 dz

¾" Mitered Hem

NAPCL20M

20" x 20" Classic Linen

Hemmed

NAPBE20H*

20" x 20" Birdseye

NAPBESB22H†

22" x 22" Birdseye,
Banded

NAPSB22H*

22" x 22" Satin Band

†Not available in Black

*Not available in Stone



CAL·MIL



Sierra Bread Display

A stylish presentation to neatly organize and merchandise your bread. Includes three drawers for loaves of bread and a top section for bagels and other pastries. Provides easy access for self-service.

- Reclaimed wood and vintage bronze painted metal
- 4 compartments

3908-84 22½" w x 14¾" d x 13¾" h

Ashwood Jar Display

An ultra-modern look with an elegant gray-washed oak frame and mirrored trim along the base. Geometric cutouts on all four sides add to the appeal of this jar display.

- Keeps condiments organized
- Contemporary style
- Includes (3) 4" square glass jars

3806-83 12¾" w x 5" d x 4½" h



3 Gallon Beverage Dispensers

Deliver refreshments in these elegant dispensers that combine sturdy metal bases with handsome wood trim. Each offers a unique style to give your beverage service an upscale look.

- BPA free
- Includes chamber and drip tray

Ashwood Collection

3804-3-83 w/Ice Chamber,
8" w x 8" d x 26" h

Sierra Collection

3906-3INF-84 w/Infusion Chamber,
8¾" w x 8¾" d x 24" h

Ashwood



Sierra

Transform your buffet with modern, industrial style.



 **WALCO**

Crate Chafers Kits & Accessories

These crate chafers create an impressive line-up display.

- Chafers kit includes food pan, water pan, chafers body, fuel cup (one for 4 qt and two for 8 qt) and lift-off lid

Chafers Kit w/Black Trim

- CR4B** 4 qt
- CR8B** 8 qt

Accessories

- CR4SG** Stainless Steel Grill for CR4B
- CR8SG** Stainless Steel Grill for CR8B
- CRBS** Burner Stand for CR4B and CR8B

*Stainless steel grill
sold separately*



The Unlimited™ Induction Range

Conveniently portable for buffet or action station. Great for limited power situations. Linear hook-up allows for 5 ranges into one 15 amp circuit. NSF, FCC, ETL.

Spring USA®

- Edge-to-edge technology reads multiple pans regardless of location
- Power receptacle in back
- Removable controls for use on countertop or built-in

SM-300CR 14" x 14" x 3½"



White Coated Stainless Steel Hotel Pans & Inserts

The look of porcelain, but with the lightweight durability of stainless steel. Featuring a non-stick, high temp polymer coating that is stain and scratch resistant.

- Dishwasher and oven safe
- Fits standard ice and steam tables

- 522-62/11** Full Size Pan, 20¾"l x 12¾" w x 2½" h
- 522-62/12** Half Size Pan, 12¾"l x 10½" w x 2½" h
- 522-62/13** Third Size Pan, 12¾"l x 7" w x 2½" h
- 522-62/23** Two-Third Size Pan, 12¾"l x 12¼" w x 2½" h
- 572-62** Round Insert, 6 qt, 15¼" dia x 2½" h
- 572-62/12** Divided Round Insert, 6 qt, 15¼" dia x 2½" h





Outperform every day.™



Induction Chafers

An elegant addition to any buffet. These stainless steel chafers are designed to work with Vollrath Induction Buffet Warmers and other Vollrath induction products.

- Chafers accept standard size steam table pans
- Self-closing lid helps keep food hot
- Available with mirror finish stainless steel or glass cover

Glass Cover	Solid Cover	
4644020	4644025	5.6 qt, 2/3 Size
4644010	4644015	8.3 qt, Full Size

Mirage® Buffet Induction Warmers

Maximize your menu offerings without maxing out your electrical capacity. Connect up to 3 units together with an inter-connect cord and run only one power cord to outlet on wall. cULus, FCC, NSF.

- Subtle, low-profile, attractive design
- Tempered, black glass top
- Touch control, 4 power settings
- 16" x 23"

5950875	Countertop, Black
5950880	Countertop, Natural
59508DW	Drop-In

Contact Toaster

Delivers perfectly toasted hamburger buns that hold up to juicy burgers, sauces and sandwiches. Good for high-volume applications that exclusively toast bread or rolls. cULus, NSF.

- Stainless steel construction
- Forced convection toasting
- Energy-efficient, fast-reacting quartz heaters
- 1/2" - 1" adjustable product opening
- 208V

VCT4-208 23"w x 10³/₁₆"d x 20³/₄"h

Conveyor Toasters

Forced convection and energy-efficient quartz heaters provide consistent results for preparing toasted bread. cULus, NSF.

- Variable speed control to achieve desired color
- Industry's only maintenance-free drive system; stainless steel drive chain does not require lubrication
- Select models also available in 208, 220 or 240V

	Product Opening	Slices/Bun Halves
CT2-120350	1/2"	Up to 350/hr
CT4-208800	1/2"	800/hr
CT4B-2081200	2 1/4"	1,200/hr
CT4-2081000	1/2"	1,000/hr
CT4-208DUAL	Top: 1/2" to 3", Bottom: Adjustable up to 1/2"	Up to 1,100/hr, Combined



Other sizes also available.





Super Pan V[®] Eighth Size Pans

Anti-jamming, eighth size steam pans provide up to 40% more capacity than ninth-size pans. Perfect for garnishes and toppings.

- 22 gauge, 300 series stainless steel
- Reinforced corners for extra durability
- Flat edge and corners keep pans tight in well

30822 2½" deep

30842 4" deep

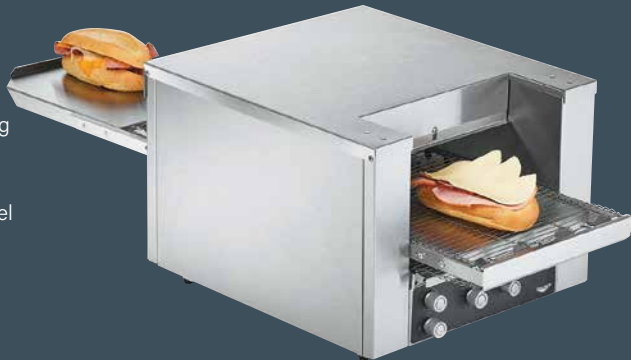
30862 5½" deep

Conveyor Sandwich Oven

Toasts a variety of sandwiches and snacks. Variable speed control allows for real-time adjustments. Forced convection promotes uniform results with energy-efficient, fast-acting quartz heaters. cULus, NSF.

- Maintenance-free drive system; stainless steel drive chain does not require lubrication
- Infinite top and bottom heat controls
- 208V

S02-20814.5 1½" - 3" Opening, 18" w Belt



VOLLRATH[®]

Other sizes also available.

Cheese Melter/Finishing Oven

Add the finishing touch to entrees and sandwiches. Good for higher-volume applications such as large restaurants. cULus, NSF.

- Stainless steel construction
- Features heavy-duty, metal-sheathed heating elements
- 208V

CM4-20835PA 35" wide, 27½" opening

Outperform every day:



Other sizes also available.

Stoelting® Vertical Batch Countertop Gelato Freezer

Perfect for small restaurants to ice cream shops and ideal for recipe development. This compact machine allows you to tweak and perfect your recipes. cETLus, cULus, NSF.

- Offer an array of samples to expand customer's selections
- Time controlled freezing cycle achieves smooth texture and product consistency
- 20" w x 16½" d x 22" h



VB1-37A 2.11 qt Capacity



Stoelting® Dipping Cabinets

Refrigerated condiment rail holds chilled fruit, candies and other add-ins to allow patrons to customize their frozen treats. Dual temperature units can hold two different products in the same cabinet. cULus, NSF.

- Container storage compartments hold 4¼ gallon square buckets
- Digital temperature control
- Heavy-duty swivel casters

MDC2-37-A

2 Compartment

MDC3-37-A

3 Compartment

MDC4-37-A

4 Compartment

DC4-37-A

4 Compartment

w/Condiment Rail

DC4T-37-A

4 Compartment,

Dual Temp w/Condiment Rail

DC4T-37R-A

4 Compartment, Dual Temp

w/Condiment Rail, Reverse Hinge



Outperform every day.™



Pillbox Hat

Stay cool and stylish. Made from EZ-Blend™ poly-cotton material, this Pewter Grey pillbox hat features a black mesh top for ventilation.

- Black mesh top
- Elastic band on back
- Machine washable
- Available in Regular (20" - 22") and XL (22" - 23½")
- Pewter Grey



H007

Performance Series Jackets

Combines the comfort and durability of the Performance Series with a modern, urban-friendly color. Professional, double-breasted style available in short sleeve or long sleeve.

- EZ-Blend™ poly-cotton material
- Breathable mesh on back of jacket
- Sleeve thermometer and pen pocket
- Side vents to keep you cool
- Available in XS - 3XL
- Pewter Grey



J205GR Short Sleeve

J200GR Long Sleeve

Aprons

Keep staff looking sharp with these professional-looking aprons. This modern style features adjustable neck straps and long ties for comfort. One size fits most.

- EZ-Blend™ poly-cotton material
- 3 Pocket
- Pocket will hold a tablet
- Pewter Grey

605WAFH-GR Waist Apron, 24" x 12",
45" Long Ties

601BAO-3-GR Bib Apron, 28" x 30",
Adjustable Neck Strap



Reduce handling with the microwave-safe pan that goes from cold to hot.



H-Pan™ High Heat Food Pans

Reduce handling and save expense with one pan that can go from prep to cooler to oven to hot holding cabinet. With the new material improvement, H-Pans withstand temperatures ranging from -40° to 375°F. NSF.

- Designed to Gastronorm specifications
- Both standard and metric graduation markings to promote easy inventory management
- Available in Amber (150)



2½" deep	4" deep	6" deep	
12HP	14HP	16HP	Full Size, 12¾" x 20⅞"
22LPHP	24LPHP	—	Half Size Long, 6⅜" x 20⅞"
22HP	24HP	26HP	Half Size, 10⅞" x 12¾"
32HP	34HP	36HP	Third Size, 6⅝" x 12¾"
42HP	44HP	46HP	Fourth Size, 6⅜" x 10⅞"
62HP	64HP	66HP	Sixth Size, 6⅜" x 6⅝"
82HP	84HP	86HP	Eighth Size, 6⅝" x 5⅝"
92HP	94HP	—	Ninth Size, 4¼" x 6⅝"



New & improved!

Pro Cart Ultra™

Polyethylene exterior is rust-proof and dent-resistant. Dual compartments for holding both hot and cold foods. Adjustable stainless steel universal rails hold GN food pans, sheet pans, trays and large pizza boxes. cETLus.

- Magnetic quick-close on door
- Heavy-duty 6" rubber casters, 2 swivel w/brakes in front, 2 rigids in the back
- 110V; also available in 220V
- 28" w x 66" h
- Available in Charcoal (615)

CAMBRO
TRUSTED FOR GENERATIONS™

	Top	Bottom	Depth
PCUPC	Passive	Cold	36½"
PCUPH	Passive	Hot	35¾"
PCUCH	Cold	Hot	36½"
PCUHC	Hot	Cold	36½"
PCUCC	Cold	Cold	36½"
PCUHH	Hot	Hot	35¾"





Spill Mop

Helps clean up spills faster, so the floor dries quicker. Once fully absorbed by the one-time use mop pad, the spill liquid becomes gel, so it will not drip when lifting mop. Lever release on mop handle minimizes contact with soiled mop pads.

- Kit includes 10 pads, handle and storage cabinet
- Wall-mount storage cabinet holds handle and up to 20 mop pads

2031093 Spill Mop Kit 1 ea Pk

Accessories

2017059 Spill Pads Only 10 ea

2017161 Handle Only 1 ea



Maximizer™ Cleaning Tools

Maximizer™ cleaning tools are engineered to minimize interruptions to help speed up tasks and keep facilities looking their best. Using the wet/dry debris pan in tandem with the Broomgee™ broom/squeegee combo saves time by reducing the steps needed to complete the cleaning task.

- Black with Yellow handle
- Cleans wet or dry spills

2018806 Wet/Dry Debris Pan

2018807 Broomgee™ Double Sided Broom/Squeegee

Slim Jim® Recycling Station Kits

An adaptable recycling solution offering a front-of-the-house look with smart functionality. Simple and durable setup with components that snap in place without the use of hardware. Hinged-lid inserts are optimized to fit any size recyclable. Venting channels make liner removal easy.

- Cinch grip secures and hides liner bags
- 23 gallon capacity

2007914 Landfill/Mixed Recycling

2007917 Landfill/Paper/Mixed Recycling

2007919 Landfill/Paper/Plastic/Cans



Provide better waste stream visibility fit for your facility's needs.

Digital Portion Control Scales

Built for performance, these digital scales cut food costs with accurate portioning. Tare and hold function and a large LCD readout make these scales a popular choice. Operates with an included AC Adapter. NSF.



Waterproof

- 6½" x 7" platform
- Rechargeable battery included

TE20SSW Dry: 20 lb x 0.005 lb/
Liquid: 320 oz x 0.05 oz



Compact

- 7.15" x 7.15" platform
- Calibration

TE2FT 2 lb x 0.1 oz/1 kg x 1 g



Oversized Platform

- 11¼" x 7¼" platform
- Low battery and overload indicators

TE330S 33 lb x 0.1 oz/15 kg x 1 g

TE660S 66 lb x 0.1 oz/30 kg x 2 g



TAYLOR

Digital PH & Water Temperature Meter

Measures a wide range of pH and temperature readings and features a large LCD display for easy monitoring. 3-point calibration with calibration powder solution for each point included.

- Automatic shut off
- (4) LR44 batteries, included
- Durable hard plastic storage case included

6580 PH Range: 0.00-14.00,
Temperature compensation:
32° to 122°F/0°C to 50°C



Digital Atomic Clock with Thermometer

Every minute counts in a busy kitchen, so keep track of time with this easy-to-read, 9½" wall clock. The clock reads in atomic time, the most accurate time and frequency standards known. It also features a 3¼" LCD readout that displays month, date and day of the week.

- Indoor temperature in °F and °C
- Time and date with manual setting
- Requires 1 AA battery (not included)

1750BK

Ask your sales representative about the
NEW TE220FT Digital Receiving Scale.

Microfiber Towels

Highly absorbent, lint-free towels. Ideal for drying and polishing, removes fingerprints, streaks and water spots. Lasts longer than traditional cotton towels.

- Polyester/polyamide blend
- Great for dusting - attracts dust and dirt
- Reusable and machine washable
- 16" x 16"
- Pk 1 dz

MFTBL Blue

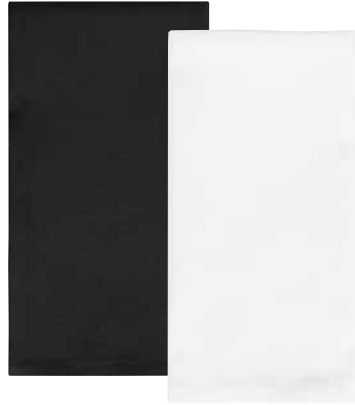


Napkins

Fade-resistant spun polyester napkins last longer than cotton with no shrinking. Superbly soft. Proprietary weaving and finishing process provides a luxurious feel.

- Reusable and machine washable
- 20" x 20"
- Available in Black (MBK) and White (NWH)
- Pk 1 dz

NPK



Pair these napkins with a bold pattern for a tabletop that makes a statement.





Japanese Steel Cutlery

Ideal for busy kitchens, this cutlery line offers quality workmanship with easy edge maintenance and rapid sharpening. Ergonomic handles provide a firm grip, slip-resistance and safety.

- Razor sharp, high carbon, stain-free Japanese steel
- Hollow ground edge
- Ergonomic polypropylene handle with textured finger points

- CTP-06** Paring Knife, 3½"
- CTP-08** Paring Knives, 3½", Set of 3
- CTP-05** Utility Knife, 6"
- CTP-01** Chef's Knife, 8"
- CTP-02** Chef's Knife, 10"
- CTP-03** Boning Knife, 6"
- CTP-04** Bread Knife, 8"
- CTP-07** Honing Steel, 12"



CTP-06



CTP-05



CTP-01



CTP-02



CTP-03



CTP-04

MERCER
CULINARY



Pizza Rocker Knife

Quickly and easily create even, straight slices with the 20" blade that slices through the entire pie with one cut. Tapered edge Japanese steel blade stays sharp.

- Black Santoprene® handles for a sure grip
- Two hanging holes for storage

M18928

Knife Roll

Heavy-duty construction with 7 elastic pockets to hold all your tools in style. Shoulder strap for easy carrying.

- Hook and loop closure
- Available in Blue (BL), Camouflage (CM), Houndstooth (HT), Pink (PK) and Red (RD)

M30007



Solid Spoon

Perforated Spoon

Trend Plating Tools

Create precise, beautifully plated dishes in style with these colorful plating tools. Colored coating is applied through a specialized process that ensures incredible durability, resulting in a long product life.

- 18/8 stainless steel core
- Satin finish hides wear
- Available in Matte Black (BK) and Rose Gold (RB)



Precision Plus™ Fish Bone Tweezers

Effortlessly remove bones from fish with these Precision Plus™ tweezers. Steel is specially tempered so the tongs spring back time after time and maintain proper shape. Designed for proper tension to reduce hand fatigue.

- Raised cross-hatch grips for excellent stability
- Beveled tip edges for firm grip of bones
- Satin finish hides wear

M35250 Standard, 4 $\frac{5}{8}$ "

M35251 Deluxe, 5 $\frac{5}{8}$ "



Prep & Garnish Tools

Handcrafted cocktails achieve new heights when finished with just the right garnish. Having the right tools to prepare those garnishes makes your job easier.

- High-carbon blades
- Comfortable handles

Bar Knives w/Guards, NSF

M33930B Fruit Knife, 2 Tines, Wavy Edge, 4 $\frac{1}{4}$ "

M33931B Utility Knife, Pointed Tip, Wavy Edge, 4"

M33932B Utility Knife, Round Tip, Wavy Edge, 4 $\frac{3}{16}$ "

M33933B Utility Knife, Pointed Tip, Plain Edge, 4"

Y-Peelers, 4" long

M33071BKB Black

M33071RDB Red

M33071WHB White

Plating Spoons

M35140 Solid, 7 $\frac{1}{8}$ "

M35138 Solid, 9"

M35161 Perforated, 7 $\frac{1}{8}$ "

M35160 Perforated, 9"

Precision Plus™ Tongs

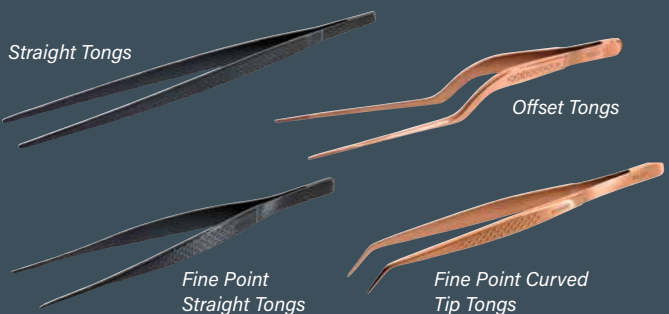
M35230 Straight, 9 $\frac{3}{8}$ "

M35236 Offset, 6 $\frac{1}{2}$ "

M35237 Offset, 7 $\frac{1}{8}$ "

M35245 Fine Point Straight, 6 $\frac{1}{8}$ "

M35244 Fine Point Curved Tip, 6 $\frac{1}{8}$ "



Quantum™ High Performance Blender

Endura™ Motor Technology brushless motor is engineered to last 2½ times longer and operate 50% more efficiently. With the Quiet Shield™ enclosure, this is one of the quietest blenders in the world. cETLus. NSF.

- Wave-Action® system
- Touchpad controls
- USB port



HBH950 64 oz Container



EXPEDITOR™ Culinary Blenders

Powerful ¾ hp motor saves on prep time. Unique chop function pulses the blades between low speed and selected blend speed. Perfect for hummus, salsa, smoothies and salad dressings. NSF, cETLus.

- Custom programs and preset timer buttons
- Transparent lid with 4 oz dosing cup
- 1 gallon capacity

3 Speeds	Variable Speed	
—	HBF1100	Polycarbonate Container
HBF900S	HBF1100S	Stainless Steel Container



Stainless Steel Container



Polycarbonate Container

otto™ The Juice Extractor

Powerful, yet quiet brushless induction motor with dual cooling fans designed for continuous use. Unique, funnel-shaped spout allows for 360° rotation to reduce splashes and drips.

- Large, 3" diameter feed chute reduces prep time
- Ergonomic Tritan™ food pusher
- Includes 13 qt pulp bin

HJE960



PrimaVac™ In-Chamber Vacuum Sealers

Great for food preservation, flavor infusion, sous vide cooking and more. Function select and pump select controls for customizing vacuum sealing, soft air and heat bar cooling times. cETLus. NSF.

- Removable heat seal bar and filler plate
- Clear lid for viewing
- 10 custom programs

HVC254 10" Seal Bar, Fits up to 10" x 13" Bags
HVC305 12" Seal Bar, Fits up to 12" x 14" Bags
HVC406 16" Seal Bar, Fits up to 16" x 20" Bags





Dual hobs and high energy efficiency for greater production.

Induction Cooker

Stir fry and sauté with ease using this new higher wattage model. The superior airflow and cooling fans permit all day use while keeping your cooking area cool. cETus, ETL Sanitation.

- Stainless steel casing
- Removable grease filter
- Now available in 7000 watts
- Also available in 3500, 5000 and 6000 watts

GL2-7000 25½" w x 16" d x 3¾" h



Shown with optional Ventless Hood.



Quarter Size Convection Oven

From pastries to entrees, bakes fast and evenly, intensifies and seals in flavor. This compact, space-saver is the perfect size. cULus.

- Stainless steel construction
- (2) 12¼" x 12" wire racks and (1) bake tray included
- 120 minute timer; up to 480°F

FC-280 18½" w x 22" d x 14" h



Electric Panini Grill

Toast Monte Cristos, quesadillas and other favorites quickly and easily. Compact and portable, this panini grill will allow you to expand your menu possibilities.

- Heavy duty stainless steel base
- 14" sq grilling surface
- Control temperature up to 570°F
- Available in grooved, flat and mixed cast iron plates

PANINI-XL 24" w x 25" d x 33" h

OneLid® Beverage Lid Dispensers

Dispense lids one-at-a-time to keep your beverage stations organized—saving you time and money. Modular design allows setup to be customized to your space.

- Choose your preferred base (vertical or slanted), size (small, medium or large) and number of lid stacks (one, two, or three)
- Add organizers for straws, stirrers, sweeteners or condiment packets

Dispensers, NSF

88600 Small, 4¼" x 4¾" x 21"

88620 Large, 5¼" x 5¼" x 21"

Bases

88630-1 Single, 5¾" x 8⅞"

88630-3 Triple, 15" x 8½"

Accessories

88640 Compact Holder, Slanted, 10¼" x 13½" x 22½"

88660 Condiment Organizer, Vertical, 5¼" x 5⅜" x 21"

88670 Straw Organizer, 5⅜" x 5⅜" x 8⅜"

Other styles and accessories also available.

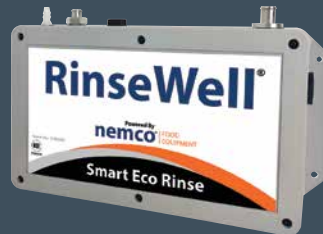


nemco® FOOD EQUIPMENT

Smart Eco-Rinse

Add HUGE utility-cost savings to your bottom line and optimize product quality with the first and only dipper well controller that maintains clean, sanitized utensils without heat or constantly flowing water! NSF.

- Aqueous ozone eliminates 99.9999% of E-coli and listeria in just 30 seconds
- Saves up to 250,000 gallons of water a year over continuous water-flow systems



- 3000-7** With 7" Spade Well
- 3000-13** With 13" Spade Well
- 3005-606** With 6" Round Dip Well

Other sizes also available.

Manual Convection Ovens

These half-size convection ovens are the perfect space saving solution for a tight kitchen. Cooking time adjustable up to 2 hours or "infinite" time to adjust cooking duration. cETLus, ETL Sanitation.

- Accommodates 14" x 18" half-size pans
- Set temperature from 200° to 500°F
- Recessed gasket to guarantee chamber cooking seal

- GS1105-17** 3 Pan Capacity, 120V
- GS1105-28** 3 Pan Capacity, 208-240V
- GS1115** 3 Pan Capacity w/Broiler, 208-240V
- GS1110-17** 4 Pan Capacity, 120V
- GS1110-28** 4 Pan Capacity, 208-240V





Sensor Faucet

Employees and customers will appreciate the touch-free convenience. ChekPoint electronic faucet with polished chrome plated brass body and 4" wall mount gooseneck spout.

- 4" centers
- 2.2 GPM vandal-resistant aerator
- AC/DC control module with internal flow control setting

EC-3105



Big-Flo Faucet

Great for filling pots and kettles. Single wall mount faucet with Big-Flo cartridge and 12" plain end swing nozzle.

- 4 arm handle
- 3/4" street elbow

BF-0299-12



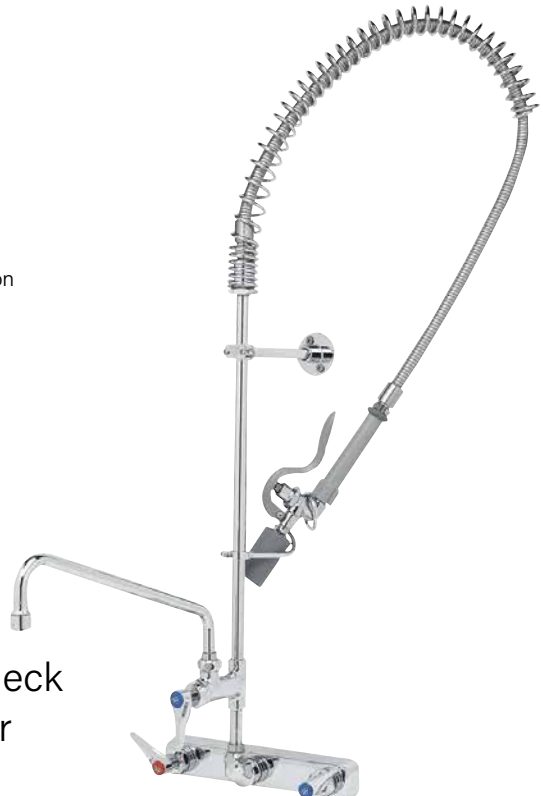
RELIABILITY BUILT IN™

EasyInstall Pre-Rinse Unit

8" wall mount workboard faucet with polished chrome plated brass body and escutcheon, add-on faucet with cerama cartridge.

- 12" swing nozzle with stream regulator outlet
- 1.07 GPM spray valve
- 6" adjustable wall bracket

B-5125-12-CRBJ



Cerama cartridges with check valves help conserve water and prevent cross flow.



MetroMax 4™ Polymer Shelving

New 21" deep shelving. All-polymer construction withstands moisture, chemicals, and harsh environments. Shelf mats, frames, and posts have built-in Microban® antimicrobial product protection. Lift-off open polymer shelf mats are dishwasher safe. Lifetime Warranty against rust and corrosion. Also available in 18" and 24" depths. NSF.

- Posts available in 63" and 74" heights

Grid Mats

MAX4-2124G
MAX4-2130G
MAX4-2136G
MAX4-2142G
MAX4-2148G
MAX4-2154G
MAX4-2160G

Solid Mats

MAX4-2124F 21" x 24"
MAX4-2130F 21" x 30"
MAX4-2136F 21" x 36"
MAX4-2142F 21" x 42"
MAX4-2148F 21" x 48"
MAX4-2154F 21" x 54"
MAX4-2160F 21" x 60"



Metro® Mightylite™ Pan Carriers

Ultra light pan carrier with 8 convenient handles is the ultimate design for lifting, carrying and moving in any situation. The new BigBoy Carrier boasts 63% more storage space than traditional top load carriers.

- Keeps food safe for 5 hours or more
- Holds hot or cold 12" x 20" and gastronorm food pans

Front Load

ML-300 Carrier, Holds 4 Pans, 17¼"w x 27"d x 19¾"h
ML400 Carrier, Holds 6 Pans, 17¼"w x 27"d x 25¾"h
MLD1 Dolly w/strap, 20½"w x 29¾"h
MLP1 Thermal Partition, 13"w x 21"d
MLC1 Caddy, 13"w x 21"d

Top Load

ML-180 Carrier, Traditional Lid, Holds 3 Pans, 15¼"w x 26¾"d x 11¾"h
ML-180XL Carrier, BigBoy, Holds 5 Pans, 15¼"w x 26¾"d x 16¾"h



SuzyQ™ Meal Service Cart

Ideal for hospitals and assisted living facilities, the SuzyQ™ cart allows each resident to be part of the decision making process during meal times. This person-centered approach to dining maximizes independence and autonomy. NSF.

- Mini SuzyQ™: ¾ size steam well for (9) ½ size insert pans, 4 tray slots hold 15" x 20" trays (not included)
- SuzyQ™: 2 full size steam wells, 2 unheated drawers hold 2 full size x 4"d insert

6754 Mini SuzyQ™, 26½" w x 45¾" l x 35" h

6755 SuzyQ™, 34" w x 41¾" x 35" h



LAKESIDE

Merchandising Cart

An attractive cart that prominently displays a variety of items for easy customer access. Slanted rails provide the perfect angle for optimum view of contents.

- Stainless steel construction with laminated end panels
- Stainless steel rails hold full size pans
- 5" casters, 2 w/brake

683 41" w x 27½" d x 62" h



Mise En Place™ Chef's Ingredient Staging Cart

This mobile, back-of-the-house cart keeps chef's ingredients at hand. The top is height adjustable and the H-base with casters allows the cart to roll under a range for easy access. NSF.

- Stainless top frame holds full size pans or smaller with inserts
- Integrated handles hold ½ pan or (2) ⅓ pans
- Speed rail with towel bar
- 2" dia wheels w/brake

140 38" w x 21" d x 35" h



Allow 2-4 weeks delivery on special order items.

Every effort has been made to verify the accuracy of all data contained in this publication, however, we cannot assume responsibility for errors or omissions.

R.W. SMITH

www.rwsmithco.com

San Diego

10101 Old Grove Rd
San Diego, CA 92131
858-530-1800

Orange County

210 Commerce
Irvine, CA 92602
949-474-1000

Austin

512-605-6076

Dallas

972-732-1722

Ft Lauderdale

954-202-9606

Houston, TX

281-498-3335

Los Angeles

323-291-0848

Miami

305-485-8800

Orlando

407-859-0601

Palm Springs

760-340-2424

Phoenix

602-528-3485

Sacramento

916-551-1458

San Francisco

415-391-8641

Tucson

520-742-6108



All Other Areas

Toll Free 800-942-1101

Featuring the newest products
from the industry's top manufacturers

ABC

American Metalcraft

Arc Cardinal

BarFly

Cal-Mil

Cambro

Chef Revival

Elite Global Solutions

Equipex

Hamilton Beach

Hollowick

Intermetro

John Ritzenthaler Company

Lakeside

Libbey

Mercer Culinary

Nemco

Rosenthal Sambonet USA

Rubbermaid Commercial
Products

Snap Drape Brands

Spring USA

Stoelting

T&S Brass

Tablecraft

Taylor Precision Products

Vollrath

Walco