

Culinary Essentials™

- ▼ KITCHEN SUPPLIES
- ▼ BAR SMALLWARES
- ▼ BAKING SUPPLIES
- ▼ PROCORE EQUIPMENT
- ▼ & MORE

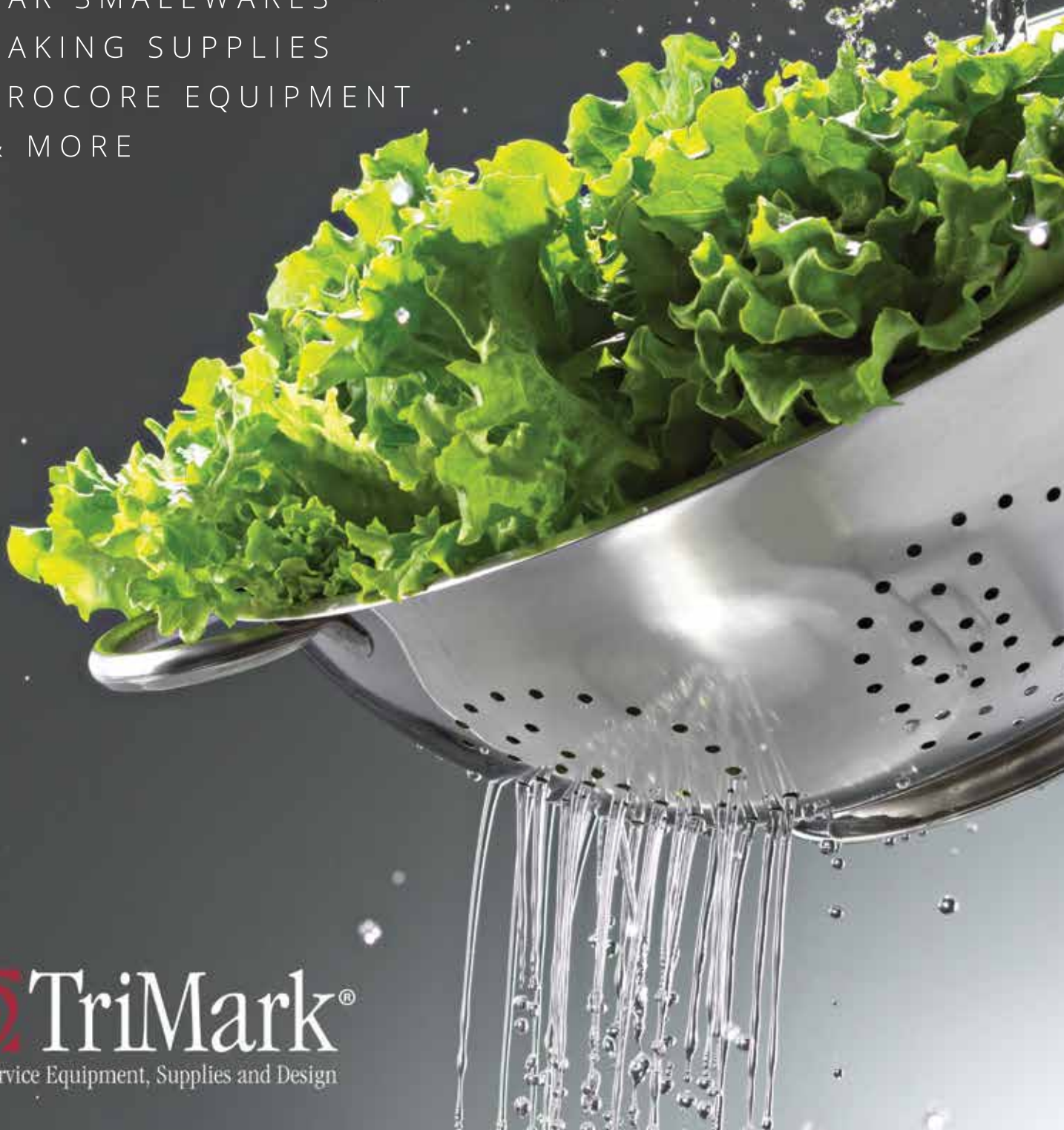






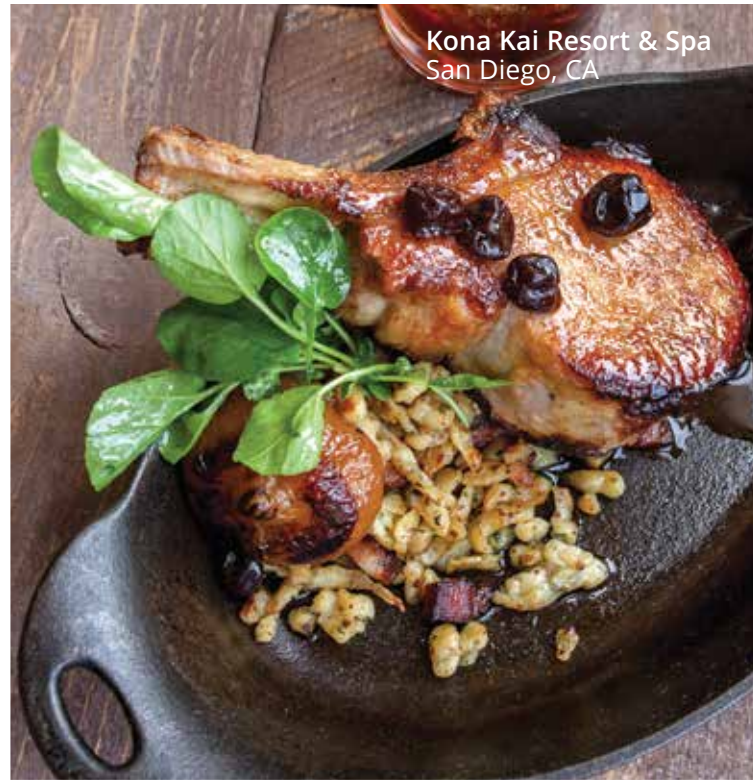
Table of Contents

| | |
|----|-------------------------|
| 6 | ProCore Equipment |
| 14 | Aprons & Textiles |
| 20 | Baking Supplies |
| 28 | Bar Smallwares |
| 36 | Buffet Service |
| 42 | Food Pans |
| 46 | Food Prep & Supplies |
| 48 | Food Storage & Shelving |
| 52 | Front of the House |
| 58 | Kitchen Smallwares |
| 64 | Kitchen Utensils |
| 70 | Pizza Supplies |
| 72 | Professional Cookware |

Where talent meets innovation



Broken Barrel
The Woodlands, TX



Kona Kai Resort & Spa
San Diego, CA

“Cooking is like painting or writing a song. Just as there are only so many notes or colors, there are only so many flavors – it’s how you combine them that sets you apart.”

Wolfgang Puck



Baltaire
Los Angeles, CA



Cafe Chloe
San Diego, CA

“To me, there’s no great chef without a great team.”

Daniel Boulud

Omni Scottsdale Resort & Spa at Montelucia
Scottsdale, AZ



“To be a good cook you have to have a love of the good, a love of hard work, and a love of creating.”
Julia Child

Tempe Mission Palms Resort
Tempe, AZ



Estancia La Jolla Hotel & Spa
La Jolla, CA









Countertop Manual Griddles

- Manual control
- Gas
- 30,000 BTU stainless steel U style burners – burner every 6"
- Stainless steel exterior
- ¾" polished griddle plate
- 4"H backsplash & sidesplash
- Double wall construction w/insulated side panels
- Removable stainless grease catch pan
- ¾" front grease trough
- Front-access pilots
- Adjustable non-skid stainless steel legs
- ¾" NPT rear gas connection

- 859619 24"W, (2) Burners
- 859620 36"W, (3) Burners
- 859621 48"W, (4) Burners



Countertop Thermostatic Griddles

- Thermostatic control
- Gas
- 200°F to 450°F temperature range
- 30,000 BTU stainless steel U style burners – burner every 6"
- Stainless steel exterior
- ¾" polished griddle plate
- 4"H backsplash & sidesplash
- Double wall construction w/insulated side panels
- Removable stainless grease catch pan
- ¾" front grease trough
- Front-access pilots
- Adjustable non-skid stainless steel legs
- ¾" NPT rear gas connection

- 859622 24"W, (2) Burners
- 859623 36"W, (3) Burners
- 859624 48"W, (4) Burners



Maintenance Tip

To prevent discoloration and damage to a griddle flat top, use a mild cleaning solution for daily washing. Train staff to avoid striking or harsh impact which leads to pinholes and surface fractures, ultimately causing expensive repairs or equipment replacement.



Countertop Charbroilers

- Manual controls
- Gas
- Stainless steel exterior
- Heavy duty 10 gauge stainless steel removable radiants
- 35,000 BTU stainless steel U style burners – burner every 6"
- Cast iron removable & reversible racks w/(3) rear height adjustments
- 4"H backsplash & sidesplash protection
- Removable full width stainless grease catch pan
- Front-access pilots
- Adjustable non-skid stainless steel legs

- 859625 24"W, (2) Burners
- 859626 36"W, (3) Burners
- 859627 48"W, (4) Burners

ProCore Equipment Warranty

ProCore Gas Cooking Equipment is warranted to be free from defects in material and workmanship under normal use and service for a period of one (1) year from the date of original purchase. ProCore Refrigeration Equipment is warranted for 2 years parts and labor and 5 years compressor warranty.

Equivalent Orifice Size Information for High Altitude – Available Upon Request



Countertop Hot Plates

- Manual controls
- Gas
- 25,000 BTU per burner
- Stainless steel exterior
- Heavy duty cast iron burners
- Lift off top
- Removable cast iron burner grates
- Removable full width stainless grease catch pan
- Front-access pilots
- Adjustable non-skid stainless steel legs

859628 12"W, (2) Burners
 859629 24"W, (4) Burners
 859630 36"W, (6) Burners



Stock Pot Gas Ranges

- Stainless steel construction
- Heavy duty 1 $\frac{7}{8}$ " thick removable cast iron top grate
- (2) standing pilot lights
- 8" adjustable legs
- Removable crumb tray
- $\frac{3}{4}$ " rear NPT gas inlet

859636 18"W x 21"D x 24"H,
 (1) Burner (3 Rings, 2 Valves), 80,000 BTU
 859637 18"W x 42"D x 24"H,
 (2) Burners (3 Rings, 2 Valves), 160,000 BTU



Ranges

- (2) adjustable oven racks for each oven
- Natural gas
- Stainless steel exterior
- 30,000 BTU cast iron burners w/individual pilot lights
- Removable cast iron grates w/manual controls
- Standard oven(s)
- Adjustable thermostat from 250°F to 550°F
- Removable crumb tray
- 24 $\frac{3}{4}$ " high backriser & shelf
- 6" adjustable legs or casters
- $\frac{3}{4}$ " NPT gas connection

859631 24"W, (4) Burners, (1) Oven
 859632 36"W, (6) Burners, (1) Oven
 859633 60"W, (10) Burners, (2) Ovens



Ranges w/Griddles

- (2) adjustable oven racks for each oven
- Natural gas
- Stainless steel exterior
- 30,000 BTU cast iron burners w/individual pilot lights
- 24" griddle, $\frac{3}{4}$ " thick plate, stainless steel "U" burner at 20,000 BTU/hr
- Removable cast iron grates w/manual controls
- Standard oven(s)
- Adjustable thermostat from 250°F to 550°F
- 24 $\frac{3}{4}$ " high backriser & shelf
- 6" adjustable legs
- $\frac{3}{4}$ " NPT gas connection
- Optional casters

859634 36"W, (2) Burners, (1) Oven
 859635 60"W, (6) Burners, (2) Ovens

Fryers

- Natural or liquid propane gas
- Stainless steel front & door
- Peened stainless tank w/ smoothed out welds
- Cool zone in fry tank
- Efficient (30,000) BTU heat exchange tubes w/high heat baffles
- High grade G90 galvanized sides & back
- Millivolt thermostat - 200°F to 400°F
- Double rod stainless steel basket hanger and (2) nickel-chrome fry baskets w/red coated handle
- 6" adjustable legs



3-TUBE FRYERS

- 859641 40 lb Capacity, Natural Gas
- 859642 40 lb Capacity, Propane Gas

4-TUBE FRYERS

- 859643 50 lb Capacity, Natural Gas
- 859644 50 lb Capacity, Propane Gas

5-TUBE FRYERS

- 859645 70 lb Capacity, Natural Gas
- 859646 70 lb Capacity, Propane Gas

Convection Oven

- 38 $\frac{1}{8}$ "W x 41 $\frac{3}{8}$ "D x 57 $\frac{3}{8}$ "H
- Natural gas
- Stainless steel construction
- Full size, single-deck
- Independently operated doors w/double pane thermal glass
- Temperature range from 150°F to 550°F
- Two-speed fan motor
- 60 minute timer
- Includes (5) oven racks
- Stainless steel legs & adjustable bullet feet
- $\frac{3}{4}$ " rear NPT gas connection
- Full size self-closing doors



- 859638 Convection Oven, 28" Legs
- 859639 Stacking Kit w/6" Legs & Interconnecting Plumbing, for Double Deck Unit
- 859640 Stacking Kit w/Casters & Interconnecting Plumbing, for Double Deck Unit

Purchasing Tip

If you're short on time or space, consider a convection oven. It can reduce cooking time while also cooking foods at a lower temperature than a standard oven, saving time for your staff and keeping the kitchen cooler.



Bottom Mount Reach-In Refrigerators

- Available in one, two or three sections
- Stainless steel front & sides
- Aluminum back & interior w/stainless steel floor
- Solid state thermostat w/ digital display
- (3) heavy duty baked epoxy racks per section
- EZ slide out condensing unit
- Bottom mounted condensing unit
- Full length integrated door handle
- Self-closing doors remain open past 90°
- Gaskets can be replaced without tools
- Field reversible 1-door units
- (4) casters w/two locking



- 859647 (1) Door, 23 cu ft, (3) Shelves
- 859648 (2) Doors, 49 cu ft, (6) Shelves
- 859649 (3) Doors, 72 cu ft, (9) Shelves

Bottom Mount Reach-In Freezers

- Available in one or two sections
- Stainless steel front & sides
- Aluminum back & interior w/stainless steel floor
- Solid state thermostat w/ digital display
- (3) heavy duty baked epoxy racks per section
- EZ slide out condensing unit
- Bottom mounted condensing unit
- Full length integrated door handle
- Self-closing doors remain open past 90°
- Gaskets can be replaced without tools
- Field reversible 1-door units
- (4) casters w/two locking



- 859650 (1) Door, 23 cu ft, (3) Shelves
- 859651 (2) Doors, 49 cu ft, (6) Shelves



Top Mount Reach-In Refrigerators

- Available in one or two sections
- Stainless steel exterior & interior
- Electronic thermostat & digital LED temp display
- Adjustable heavy duty epoxy coated wire shelves
- Top mounted condensing unit
- Integrated door handle
- Larger fan motors & blades for more efficient air flow
- Self-closing doors remain open past 90°
- Gaskets can be replaced without tools
- Field reversible 1-door units
- (4) casters w/two locking



- 859652 (1) Door, 23 cu ft, (3) Shelves
- 859653 (2) Doors, 49 cu ft, (6) Shelves

Top Mount Reach-In Freezers

- Available in one or two sections
- Stainless steel exterior & interior
- Electronic thermostat & digital LED temp display
- Adjustable heavy duty epoxy coated wire shelves
- Top mounted condensing unit
- Self-closing doors remain open past 90°
- Integrated door handle
- Larger fan motors & blades for more efficient air flow
- Gaskets can be replaced without tools
- Field reversible 1-door units
- (4) casters w/two locking



- 859654 (1) Door, 23 cu ft, (3) Shelves
- 859655 (2) Doors, 49 cu ft, (6) Shelves



Routine Checks for Refrigeration

Regularly check the closure of the unit's doors for a proper seal to ensure the correct temperature is maintained for the appropriate storage of various food items. Fluctuating climate may spoil foods and alter the flavors of edible items.

Stainless Steel Refrigerator Merchandisers

- Available in one or two sections
- Black coated steel exterior
- White powder coated interior cabinet
- Full hinged triple pane locking glass door(s)
- Adjustable heavy duty coated shelves
- LED lighting
- Thermostat w/digital temp control
- Bottom mount, slide out condenser
- Energy Star efficient refrigeration system
- Gaskets can be replaced without tools



- 859656 (1) Door, 23 cu ft, (4) Shelves
 859657 (2) Doors, 48 cu ft, (8) Shelves



Bottle Coolers

- LED lighting
- (2) sliding lids
- (4) 1" fitted rollers
- Bottle cap opener & catcher
- Solid state thermostat w/digital display
- Black exterior
- 304 stainless steel interior
- Side mount compressor
- 115v/60/1-ph, 7.0 amps, NEMA 5-15P

- 859658 13.50 cu ft, (2) Dividers
 859659 17.20 cu ft, (3) Dividers



Sandwich/Salad Top Refrigerators

- Available in one or two sections
- Stainless steel front & sides
- Aluminum back
- Self-closing doors remain open past 90°
- Full length integrated door handle
- Thermostat w/digital display
- Includes ½ size pans & full length poly-vinyl cutting board
- EZ slide out condenser
- Casters w/two front brakes
- Field reversible 1-door units

- 859660** 29"W, (1) Door, 7 cu ft, (8) Pans, (1) Shelf
859661 48"W, (2) Doors, 12 cu ft, (12) Pans, (2) Shelves
859662 61"W, (2) Doors, 15.50 cu ft, (16) Pans, (2) Shelves

Mega-Top Refrigerated Sandwich Counters

- Available in one or two sections
- Stainless steel front, sides & top
- Aluminum back
- Self-closing doors remain open past 90°
- Full length integrated door handle
- Thermostat w/digital display
- Includes ½ size pans & full length poly-vinyl cutting board
- Casters w/two front brakes
- Field reversible 1-door units

- 859663** 29"W, (1) Door, 7 cu ft, (12) Pans, (1) Shelf
859664 48"W, (2) Doors, 12 cu ft, (18) Pans, (2) Shelves
859665 61"W, (2) Doors, 15.50 cu ft, (24) Pans, (2) Shelves



Undercounter Refrigerators

- Available in one, two or three sections
- Stainless steel front & sides
- Aluminum back
- Self-closing doors remain open past 90°
- Full length integrated door handle
- Thermostat w/digital display
- EZ slide out condenser
- Casters w/two front brakes
- Field reversible 1-door units

- 859666** 27"W, (1) Door, 6.50 cu ft, (1) Shelf
859667 48"W, (2) Doors, 12 cu ft, (2) Shelves
859668 61"W, (2) Doors, 15.50 cu ft, (2) Shelves
859669 72"W, (3) Doors, 18 cu ft, (3) Shelves





Aprons & Textiles

Protect employees from high heat and unsightly messes with quality oven mitts, pot holders, towels and aprons. Choose from Kevlar, silicone and terry mitts for your preferred comfort. Classic waist and bib aprons are also available in a variety of colors for wait staff and chefs.

Aprons & Textiles



Pyrotex Oven Mitts

- Available in forearm, elbow or shoulder length
- Beige or black
- Pk as pair

| | | | |
|--------|-----------|--------|-----------|
| 859385 | 13" Beige | 859389 | 17" Beige |
| 859387 | 15" Beige | 859390 | 17" Black |
| 859388 | 15" Black | 859386 | 24" Beige |



High-Heat Terry Mitt

- 17"
- Elbow-length
- Steam-stopping
- Beige
- Pk as pair

859414



Terry Pan Grabber

- 8" x 11"
- Steam-stopping
- Beige

859410



Ultra-Protective Oven Mitt

- Flame-Resistant
- Elbow length
- Pk as pair

859391



Flame-Tastic Kevlar Oven Mitt

- 16"
- Elbow-length
- Yellow

859406



Silicone Oven Mitts

- Non-stick
- Silver
- Pk as pair

| | |
|--------|-----|
| 859407 | 13" |
| 859408 | 16" |

Aprons & Textiles



Terry Pot Holders
 • 8" x 8"
 • Available in black or beige
 • 100% terry
 • Pk as pair

859413 Black
 859412 Beige



Silicone Pot Holder
 • 7" x 7"
 • Non-stick
 • Silver
 • Pk as pair

859411



Pan Grabber Pot Holder
 • 8½" x 11½"

859372



Neoprene Cleaning Glove
 • 17"
 • Elbow-length
 • Waterproof
 • Heat-resistant
 • Black
 • Pk as pair

859402



Pyrotex Skillet Handle Holder
 • 6"
 • Flame-resistant
 • Black
 • Pk as pair

859404



Skillet Handle Holder
 • 6"
 • Silver
 • Pk as pair

859405



Terry Bar Mop Towel
 • 16" x 19"
 • Ribbed
 • White
 • Pk 12

859401



Herringbone Weave Towel
 • 14½" x 25½"
 • Striped
 • Lint-free
 • Pk 12

859403



Aprons & Textiles



4-Pocket Extra-Long Bib Apron
 • 26"W x 31"L
 • (3) pockets & pen pocket

859393 Black
 859394 Hunter Green



4-Pocket Bib Apron
 • 26"W x 23"L
 • (3) pockets & pen pocket

859392 Black
 859395 Red



Extra Long Waist Apron
 • 26"W x 18½"L
 • (3) pockets & pen pocket
 • Black

859398



2-Pocket Bistro Waist Apron
 • 32"W x 28"L

859383 Black
 859384 White



4-Pocket Waist Apron
 • 25"W x 11"L
 • (3) pockets & pen pocket

859397 Black
 859396 Burgundy

Aprons & Textiles



White Bib Apron
• 32"W x 32½"L
• Pen/thermometer pocket
859400



3-Pocket Bib Apron
• 32"W x 32½"L
• White
• (2) pockets & pen/
thermometer pocket
859382



**4-Way Reversible
Waist Apron**
• 32"W x 21½"L, when folded
• No pockets
• White
859399



Vinyl Bib Apron
• 26"W x 28"L
• No pockets
• Brown
859415



**Vinyl
Dishwash Apron**
• 34"W x 47"L
• No pockets
• Clear
859409





Baking Supplies

Prepare fresh pastries, sweet meringues or moist cakes with precision baking tools. Measure ingredients to exact proportions using stainless steel measuring cups and spoons, then combine easily with an assortment of whisks and spatulas. Decorating tools are also available to complete your exceptional presentation.

Mixing Bowl, 8 qt
859144

Sauce Cup, 1.50 oz
859184

Measuring Spoons
859137

Rolling Pin
854549

Baking Supplies



Whips

- Stainless steel
- Strong sturdy handles
- Well-built and easy to clean

| PIANO | | FRENCH | |
|--------|----------|--------|----------|
| 859323 | 10" long | 732491 | 10" long |
| 859324 | 12" long | 737478 | 18" long |
| 859325 | 14" long | | |
| 859326 | 16" long | | |
| 859327 | 18" long | | |



Pastry Brushes

- Plastic ferrule with boar bristles
- Chef's choice for delicate pastries and desserts
- Wood handle

| | |
|--------|--------------------|
| 859019 | 1" round, 8½" long |
| 859020 | 1½" wide, 8½" long |
| 859021 | 2" wide, 8½" long |
| 859022 | 3" wide, 9" long |



Piano Whisks

- Stainless steel
- Fiberglass handle - heat resistant up to 480°F
- Sturdy black handle for easy gripping

| | | | |
|--------|----------|--------|----------|
| 859317 | 10" long | 859320 | 16" long |
| 859318 | 12" long | 859321 | 18" long |
| 859319 | 14" long | 859322 | 20" long |



Pastry Tips

- Stainless steel
- Available in round & star
- Sizes 0-9
- Set of 10

| | |
|--------|-------|
| 859334 | Round |
| 264617 | Star |





Rolling Pin

- 18" long
- 3" dia.
- Wood

854549

Shakers/Dredges

- 12 oz capacity
- Aluminum with screw-on tops
- Easy to fill and clean

859084 w/o Handle
859083 w/Handle



Liquid Measure

- Polycarbonate

859135 1 Pint
859132 1 qt
859133 2 qt

Graduated Measure

- 4 qt capacity
- Aluminum construction
- Embossed bars to denote quart graduations

859134



Baking Supplies



Pastry Stand

- 12¹³/₁₆" dia. x 6⁷/₈"H
- Stainless steel with pedestal base
- Ships knocked down, easy to assemble

859038



4-Piece Measuring Cup Set

- Stainless steel construction for long life durability
- Handles have holes for easy hanging & storage
- Measurements stamped into side
- Includes ¼ cup, ½ cup, ¾ cup & 1 cup

859136



Pastry Stand Cover

- 12" dia. x 5"H
- Plastic
- Clear

859034



Measuring Spoon Set

- Stainless steel with ring
- Includes: ¼ tsp, ½ tsp, 1 tsp & 1 tbsp

859137

Keep Things Cool

When working with pastry dough it's important to use a working surface and tools that are cold. Rolling pins and baking sheets can be refrigerated for a brief period for this purpose. Consider also working away from hot equipment to further avoid melting the butter in the dough.



Plate Scrapers

- White vinyl blade molded on a high impact polystyrene handle
- Heat resistant up to 140°F
- Flexible blade retains its shape

- 859205 9½" long, 1⅜"W Blade
 859222 9½" long, 2"W Blade
 859220 13½" long, 2¾"W Blade
 859221 16¾" long, 2⅓"W Blade



Spoon-Shaped Scrapers

- White polystyrene handle
- Heat resistant up to 140°F

- 859217 10" long, 2⅜"W Blade
 859218 14" long, 3"W Blade



High Heat Plastic Spatulas

- White silicone rubber blade molded on a red nylon plastic handle
- Heat resistant up to 600° F
- Perfect utensil for non-stick cookware

- 859219 10" long, 2½"W Blade
 859203 14" long, 2¾"W Blade
 859204 16" long, 2¾"W Blade



High Heat Scraper

- White silicone rubber blade molded on a red nylon plastic handle

- 859215 10" long
 859216 14" long



Baking Supplies



Heavyweight Mixing Bowls

- Bright mirror finished stainless steel
- Ideal for whipping cream, mixing batter & more
- NSF



859138 1.50 qt, 7¾" dia.
 859142 3 qt, 9½" dia.
 859143 5 qt, 11¾" dia.
 859144 8 qt, 13¼" dia.

859139 13 qt, 16" dia.
 859140 16 qt, 17⅝" dia.
 859141 20 qt, 18⅝" dia.



Muffin/Cupcake Pan

- Made of aluminum
- Available in 12 or 24 cup
- 3 oz capacity cups

859145 12 Cups, 14" x 10¾"
 859146 24 Cups, 14" x 20½"



Aluminum Pie Pan

- 10" dia.
- Angled sides prevent crust from slumping

859152



Cake Pans

- Aluminum

859037 9" dia., 2" deep
 859035 12" dia., 2" deep
 859036 18" dia., 3" deep



Mobile Sheet Pan Rack

- 69¼"H
- Aluminum frame
- Open sides with 1½" ribbed angle
- Fits (20) 18" x 26" sheet pans
- Ships knocked down

119215



Baking Mats

- Silicone

858989

Full Size

858988

One-Half Size



Bun Pans

- Aluminum
- NSF



859367

Full Size, 18" x 26" x 1", 18 Gauge

859366

Full Size, 18" x 26" x 1", 16 Gauge

859370

Full Size Perforated, 18" x 26" x 1", 18 Gauge

859365

One-Half Size, 18" x 13" x 1", 18 Gauge

859368

One-Quarter Size, 9½" x 13" x 1", 16 Gauge





Bar Smallwares

Stock your bar with tools that make crafting picture worthy cocktails a breeze. Smallwares, shakers, glass rimmers and bar caddies will help to keep work areas tidy and your bartender ready to mix.

Jiggers
859115, 735256, 859113, 859114

Pronged Strainer
859042

Julep Strainer
728947

Bar Spoon
858994

Ice Tong
737651

Bar Smallwares



Waiter's Corkscrew

- 4 $\frac{3}{8}$ " long
- Black plastic handle over stainless steel
- Includes retractable knife, corkscrew and bottle opener

859044



Double Jiggers

- Stainless steel
- Rolled edge

859115 $\frac{3}{4}$ oz and 1 $\frac{1}{4}$ oz

859113 1 oz and $\frac{1}{2}$ oz

735256 1 oz and 1 $\frac{1}{2}$ oz

859114 1 oz and 2 oz



Bar Spoon

- 11" long
- Stainless steel
- Twisted
- NSF

858994



Ice Tong

- 6 $\frac{1}{4}$ " long
- Stainless steel

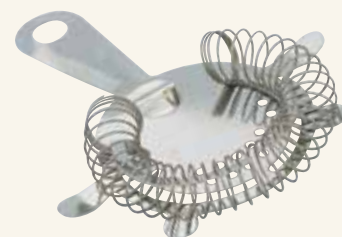
737651



Bar Scoop

- 9 $\frac{1}{2}$ " long
- Stainless steel
- NSF

859197 4 oz



Cocktail Strainers

- Stainless steel

859041 2 Prong, 3 $\frac{1}{2}$ " long

859042 4 Prong, 3 $\frac{1}{2}$ " long

Bar Smallwares

Ice Scoops

- Polycarbonate

859198 6 oz
859199 64 oz



Cast Aluminum Scoops

- Die-cast aluminum construction
- Highly polished inside and outside
- Groove-finished handle with finger grips

859200 12 oz, 12¹/₁₆" long
859201 24 oz, 14¹/₃₂" long
859202 58 oz, 18³/₈" long



Can Tapper

- 4¹/₈" long
- Nickel-plated steel

859451



Flat Bottle Opener

- 7" long
- 18/8 stainless steel

859147



Extra Thick Bottle Opener

- 7" long
- Flat-shaped
- 18/8 stainless steel

323006



Julep Strainer

- 6¹/₂" long
- Stainless steel

728947



Wooden Muddler

- 8" long

737535

Quick Tip

Help control costs by using measured pourers and jiggers. These tools prevent spillage and keep consistency with the composition of mixed drinks.



Bar Smallwares

Malt Cup

- 30 oz capacity
- Two-piece stainless steel construction
- Graduation marks molded on side
- Fits standard malt machines
- NSF

859130



Cocktail Shaker

- 30 oz capacity
- Stainless steel construction
- Sturdy design with reinforced bottom
- Works great with cocktail strainer

859040

Serve Signature Drinks

Set the ambiance and identity of your bar by creating a signature drink that differentiates you from competitors and creates a lasting impression.



Glass Rimmer

- 3-tier black plastic construction
- 6 $\frac{5}{16}$ "W x 7 $\frac{7}{8}$ "L x 3"D
- Rims a 5 $\frac{1}{2}$ " glass
- For lime juice, sugar and salt

859183



Multiple Warehouses





Juice Pour Bottle

- 1 qt
- Includes lids & spouts
- Assorted colors
- Complete unit

858995



Bar Organizer

- 5 $\frac{3}{8}$ "W x 9 $\frac{1}{2}$ "L x 4 $\frac{1}{8}$ "H
- Black plastic
- Multiple compartments to hold napkins, coasters and straws

858993



6-Compartment Bar Caddy

- 17 $\frac{3}{4}$ "W x 5 $\frac{1}{2}$ "D x 3 $\frac{1}{2}$ "H
- Attractive stainless steel frame and hinges
- Durable, molded clear acrylic lid
- Includes one-pint plastic inserts
- Keeps garnishes organized & sanitary

858990

Bar Smallwares



Single Speed Rails

- Stainless steel
- Keyhole mount

859223 22"W
859224 32"W



Bar Serving Trays

- Black satin
- Fiberglass trays with non-skid surface
- Thick aluminum wire molded in rim to eliminate warping & cracking

859308 Round, 11"
859309 Round, 14"
859310 Round, 16"
859311 Oval, 22" x 27"



Non-Slip Bar Mat

- 27"W x 3¼"D
- Flexible black rubber mat with drainage area
- Molded-in pattern provides sure grip for wet glasses

858992



Bar Service Mat

- 18"W x 12"D
- Flexible black rubber

858991



Chrome Tray Stand

- 19½" x 15" x 31"H
- Chrome-plated tubular steel
- 1" nylon strap with cross bars
- Easy to carry and set up

859314



Wood Tray Stands

- Dark walnut finish
- Washable
- Rubber slip-proof stop rings

859315 31"H, Turned Legs
 859312 32"H
 859313 38"H



Multiple Warehouses



Stainless Steel Wine Bucket & Stand

- 18/10 stainless steel
- Superb non-insulated bucket
- Ideal wine display for the dining room

859331 Wine Bucket, 8¼" dia.
 859329 Stand, 36"H

Chrome-Plated Wine Bucket & Stand

- Elegant chrome-plated wine bucket
- Collapsible stand for easy storage and transport

859330 Wine Bucket, 8 qt
 859328 Stand, 30"H



Industry Trend

Swap happy hour for aperitivo. This Italian tradition features beverages with lower alcohol content, meant to stimulate the appetite.



Buffet Service

The key to a successful buffet service is in the details. Ensure your display is complete with serving utensils that complement your chafers, airpots to keep beverages warm and squeeze bottles for easy condiment storage.

Slotted Serving Spoon
732915

Solid Serving Spoon
738562

Buffet Service



Portion Servers

- Easy-to-serve, spoon-shaped server
- Color-coded, plastic contoured 10½" handles
- Stainless steel bowls and shafts
- Dishwasher safe
- NSF



PERFORATED SERVER

- 859172 1 oz, Yellow Handle
- 859174 2 oz, Red Handle
- 859176 3 oz, Beige Handle
- 859178 4 oz, Green Handle
- 859180 6 oz, Black Handle

SOLID SERVERS

- 859173 1 oz, Yellow Handle
- 859175 2 oz, Red Handle
- 859177 3 oz, Beige Handle
- 859179 4 oz, Green Handle
- 859181 6 oz, Black Handle
- 859182 8 oz, Blue Handle



Basting Spoons

- Stainless steel
- Durable and sanitary
- Available with perforated, solid and slotted bowls
- NSF

0.6mm STAINLESS STEEL

859381 Perforated Spoon, 13"

1.2mm STAINLESS STEEL

- 859003 Solid Spoon, 13"
- 859001 Slotted Spoon, 13"
- 859000 Perforated Spoon, 13"
- 859005 Perforated Spoon, 15"
- 859007 Solid Spoon, 15"
- 859006 Slotted Spoon, 15"



Stainless Steel Serving Utensils

- Round and flat handles

FLAT HANDLES

- 859030 Solid Spoon, 10"
- 859031 Solid Spoon, 11½"
- 859029 Slotted Spoon, 11½"
- 859025 Pastry Server, 11½"
- 859028 Soup Ladle, 1 oz, 9½"

ROUND HANDLES

- 859026 Deep Ladle, 13"



Plastic Handle Basting Spoons

- Black plastic handles add cool touch
- Stainless steel bowls and shafts
- Helps to keep meats moist while roasting

- 859004 Solid, 13"
- 859002 Slotted, 13"

Quick Tip

Keep the buffet lines moving by placing glassware, drinks and utensils at a different station than the main food table.



18/8 Stainless Steel Tongs

- 859023 Small
- 859024 Large



One-Piece Solid Food Portioner

- 10³/₄" long
- Grooved polypropylene handles
- Stainless steel bowls & shafts
- Heat resistant to 392°F

- 859335 3 oz, Beige Handle
- 859336 4 oz, Green Handle

Utility Tongs

- Heavyweight stainless steel
- Coiled spring for precise control
- Ideal for lifting, turning and transferring food

- 859307 9¹/₂"
- 859305 12"
- 859306 16"



Heavyweight Pom Tongs

- 6" long
- Stainless steel
- One-piece construction
- NSF

859291



Coated Utility Tongs

- Durable one-piece stainless steel
- PVC coated handles
- Color-coded to prevent cross contamination
- Heat resistant up to 180°F

- | | |
|-------------------|--------------------|
| 859299 9", Black | 859292 12", Black |
| 859300 9", Blue | 859293 12", Blue |
| 859301 9", Green | 859294 12", Green |
| 859302 9", Red | 859295 12", Red |
| 859303 9", Tan | 859296 12", Tan |
| 859453 9", White | 859297 12", White |
| 859304 9", Yellow | 859298 12", Yellow |



Buffet Service



Hollow Handle Buffetware

- Mirror finished stainless steel
- Elegant one-piece design
- Pistol grip handles

738562 Solid Serving Spoon, 11 $\frac{3}{8}$ "
 732915 Slotted Serving Spoon, 12"
 859027 Pastry Server, 10 $\frac{3}{4}$ "



Multiple Warehouses

Industry Trend

Cut the cords! Keep food at safe temperatures by using chafers alternatives like butane stoves and ice packs.



Fuel Holder

- 8 oz capacity
 - Stainless steel with lid
 - Fits most chafers stands
- 859435



Butane Fuel

- 8 oz
 - Pk 12
- 859360



Dual Safety System Butane Fuel

- Temperature sensing valve
 - Rim vent release
 - Pk 12
- 859361



Squeeze Bottle Dispensers

- Clear plastic bottles
- Color-coded lids available
- Popular for condiments and sauces
- Ideal for buffets, outdoor service and sandwich tables
- Pk 12

WIDE MOUTH

- 859011 16 oz, Clear
- 859012 16 oz, Green
- 859013 24 oz, Clear

STANDARD

- 859015 8 oz, Clear
- 859010 12 oz, Clear
- 859014 32 oz, Clear
- 859008 16 oz, Blue Lid
- 859009 16 oz, Yellow Lid



Silverware Cylinders

- Keeps flatware clean and organized
- Available in stainless steel and plastic
- Great for storage or displaying at buffet table

- 859062 Stainless Steel, 4¼" x 5½"
- 859061 Plastic, 4¼" x 5¼"



Airpots

- Stainless steel and black
- Stainless lined
- Available in various sizes

- 859362 2.2 liter
- 859363 3 liter
- 859364 4 liter



Methanol Gel

- 2 hour burn time
- Pk 6 dz

859341



Ethanol Gel

- 2 hour burn time
- Pk 6 dz

859342





Food Pans

Versatile food pans used for ingredient storage and transportation of side dishes to catered events and buffet spreads. Choose stainless steel or plastic to best suit your menu's needs. Covers and false bottoms customize pans for endless uses in your kitchen.

Full Pan
859270

1/2 Pan
859254

1/3 Pan
859258

1/6 Pan
859264

Food Pans



Steam Table Pans, Covers & False Bottoms

- Smooth curves and a bright finish for an elegant buffet
- 22 gauge, 18/8 stainless steel, solid and perforated pans
- Reinforced edges to prevent corners from bending
- Go from freezer to oven without re-panning

FULL SIZE - 20 $\frac{3}{4}$ " X 12 $\frac{3}{4}$ "

| | |
|--------|------------------------------------|
| 859268 | 2 $\frac{1}{2}$ " Deep |
| 859269 | 2 $\frac{1}{2}$ " Deep, Perforated |
| 859270 | 4" Deep |
| 859271 | 4" Deep, Perforated |
| 859272 | 6" Deep |
| 859273 | 6" Deep, Perforated |
| 859238 | Flat, Solid Cover |
| 859237 | Flat, Slotted Cover |
| 859242 | False Bottom |

TWO-THIRDS SIZE - 13 $\frac{5}{8}$ " X 12 $\frac{3}{4}$ "

| | |
|--------|------------------------|
| 859267 | 2 $\frac{1}{2}$ " Deep |
|--------|------------------------|

ONE-HALF SIZE - 12 $\frac{3}{4}$ " X 10 $\frac{3}{8}$ "

| | |
|--------|------------------------------------|
| 859252 | 2 $\frac{1}{2}$ " Deep |
| 859253 | 2 $\frac{1}{2}$ " Deep, Perforated |
| 859254 | 4" Deep |
| 859255 | 4" Deep, Perforated |
| 859256 | 6" Deep |
| 859449 | Flat, Solid Cover |
| 859231 | Flat, Slotted Cover |
| 859239 | False Bottom |

ONE-THIRD SIZE - 12 $\frac{3}{4}$ " X 6 $\frac{7}{8}$ "

| | |
|--------|------------------------|
| 859257 | 2 $\frac{1}{2}$ " Deep |
| 859258 | 4" Deep |
| 859259 | 6" Deep |
| 859233 | Flat, Solid Cover |
| 859232 | Flat, Slotted Cover |
| 859240 | False Bottom |

ONE-FOURTH SIZE - 10 $\frac{3}{8}$ " X 6 $\frac{3}{8}$ "

| | |
|--------|------------------------|
| 859260 | 2 $\frac{1}{2}$ " Deep |
| 859261 | 4" Deep |
| 859262 | 6" Deep |
| 859234 | Flat, Slotted Cover |
| 859241 | False Bottom |

ONE-SIXTH SIZE - 6 $\frac{7}{8}$ " X 6 $\frac{3}{8}$ "

| | |
|--------|------------------------|
| 859263 | 2 $\frac{1}{2}$ " Deep |
| 859264 | 4" Deep |
| 859265 | 6" Deep |
| 859236 | Flat, Solid Cover |
| 859235 | Flat, Slotted Cover |

ONE-NINTH SIZE - 6 $\frac{7}{8}$ " X 4 $\frac{1}{4}$ "

| | |
|--------|---------|
| 859266 | 4" Deep |
|--------|---------|

FLAT ADAPTER BARS

| | |
|--------|-----|
| 859229 | 12" |
| 859230 | 20" |

VEGETABLE INSETS & COVERS

| | |
|--------|------------------------------|
| 859246 | 1.25 qt |
| 859248 | 2 qt |
| 859249 | 2.50 qt |
| 859250 | 4.25 qt |
| 859251 | 7.25 qt |
| 859247 | 11 qt |
| 859111 | Cover, Notched, Fits 4.25 qt |
| 859450 | Cover, Fits 7.25 qt |
| 859112 | Cover, Notched, Fits 7.25 qt |
| 859448 | Cover, Fits 11 qt |
| 859110 | Cover, Notched, Fits 11 qt |



Stainless Steel Bain Marie Pots

- Mirror finish stainless steel
- Great for dressings, condiments or holding utensils

737378 1.25 qt, 4 1/8" dia. x 5 3/4"H
728507 2 qt, 5 1/4" dia. x 6 3/4"H



Plastic Food Pans & Covers

- Virtually unbreakable
- Clear polycarbonate
- Withstand temperatures from -40° to 210°F
- NSF



FULL SIZE - 20 3/4" X 12 1/2"

771416 2 1/2" Deep
771417 4" Deep
527190 6" Deep
540432 8" Deep
723712 Flat Cover
859369 Notched Cover w/Handle

ONE-HALF SIZE - 20 3/4" X 10 1/2"

723690 2 1/2" Deep
723691 4" Deep
723692 6" Deep
723713 Flat Cover
785524 Notched Cover w/Handle
527579 Drain Shelf

ONE-THIRD SIZE - 12 3/4" X 6 1/2"

723686 2 1/2" Deep
762952 4" Deep
523714 6" Deep
723714 Flat Cover
723735 Notched Cover w/Handle
555476 Drain Shelf

ONE-FOURTH SIZE - 10 1/2" X 6 3/8"

785516 4" Deep
555236 Notched Cover w/Handle
555438 Drain Shelf

Quick Tip

Use versatile food pans to regulate the temperatures of the ingredients in your commercial kitchen for chilling, cooking and reheating.

ONE-SIXTH SIZE - 6 1/2" X 6 3/4"

762950 2 1/2" Deep
723682 4" Deep
723683 6" Deep
723716 Flat Cover
723734 Notched Cover w/Handle
533240 Drain Shelf

ONE-NINTH SIZE - 6 1/2" X 4 1/4"

723684 4" Deep
723717 Flat Cover

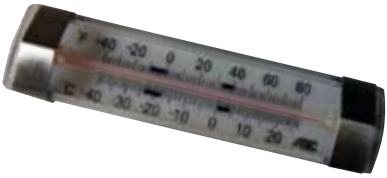
Food Prep & Supplies

When storing and preparing meals for your menu, nothing is more important to safety than proper food temperatures. To maintain safe zones, thermometers designed for refrigerator, freezer and deep fryer use are available.



Quick Tip

Store thermometers near ranges, ovens or fryers and scales by prep stations for quick access.



Refrigerator/Freezer Thermometer

- Stainless steel with plastic cover
- Tube style
- -40° to 80°F

859289



Meat Thermometer

- Stainless steel
- Dial display
- 140° to 190°F

859285



Oven Thermometer

- Stainless steel
- Dual dial
- 100° to 600°F

859286



Deep Fry/Candy Thermometer

- Stainless steel
- Zoned dial display
- 100° to 400°F

859452



Pocket Thermometer

- Stainless steel
- Dual 1/4" dia. dial
- 0° to 220°F

859287



Digital Pocket Thermometer

859288



Tomato Corer

- Red plastic handle

859290

Dial Portion Scale

- 32 oz x .25 oz graduation
- Top loading counter model
- Rotating dial
- Stainless steel

707196



Spray Bottle

- 24 oz
- w/ Trigger
- Pk 3

859496



Kleen-Pails

- Comes in red or green

- 859438 3 qt, Green, Detergent Printing
- 859439 3 qt, Red, Sanitizing Solution Printing
- 859436 6 qt, Green, Detergent Printing
- 859437 6 qt, Red, Sanitizing Solution Printing





Food Storage & Shelving

Organize ingredients and supplies in your refrigeration units, storage room and throughout your commercial kitchen with durable racks and shelving. Integrate easy-to-assemble and rust-resistant storage solutions to help employees maintain maximum back-of-house efficiency.

Food Storage & Shelving



Round Storage Containers & Covers

- Polycarbonate
- Molded-in handles
- Resistant to food acids, oil & alcohol
- Withstand temperatures from -40° to 210°F
- NSF



CONTAINERS

| | |
|--------|-------|
| 785443 | 1 qt |
| 785442 | 2 qt |
| 771410 | 4 qt |
| 785454 | 6 qt |
| 785477 | 8 qt |
| 785492 | 12 qt |
| 785493 | 18 qt |

COVERS

| | |
|--------|-----------------|
| 537326 | Fits 1 qt |
| 540203 | Fits 2 and 4 qt |
| 540409 | Fits 6 and 8 qt |



Storage Tip

Store food at least 6 inches above the floor to prevent contamination from dust, insects and rodents.



Food Storage Boxes & Covers

- Clear polycarbonate or white polyethylene
- Withstand temperatures from -40° to 210°F
- NSF

CONTAINERS

| | |
|--------|-----------------------------------|
| 530219 | 1.75 gal, 12" x 18" x 3½"D, Clear |
| 530735 | 3 gal, 12" x 18" x 6"D, Clear |
| 537080 | 4.75 gal, 12" x 18" x 9"D, Clear |
| 509711 | 5 gal, 18" x 26" x 3½"D, Clear |
| 547877 | 8.75 gal, 18" x 26" x 6"D, Clear |
| 785179 | 8.75 gal, 18" x 26" x 6"D, White |
| 555081 | 13 gal, 18" x 26" x 9"D, Clear |
| 555322 | 13 gal, 18" x 26" x 9"D, White |

FLAT COVERS

| | |
|--------|-----------|
| 537551 | 12" x 18" |
| 558000 | 18" x 26" |



Square Storage Containers & Covers

- Clear polycarbonate
- Withstand temperatures from -40° to 210°F
- Grip tight polyethylene covers sold separately
- NSF

CONTAINERS

| | |
|--------|-------|
| 721738 | 2 qt |
| 721739 | 4 qt |
| 762875 | 6 qt |
| 721742 | 8 qt |
| 721732 | 12 qt |
| 721735 | 18 qt |
| 771353 | 22 qt |

COVERS

| | |
|--------|--------------------------------------|
| 527518 | Fits 2 and 4 qt, Kelly Green |
| 530339 | Fits 6 and 8 qt, Winter Rose |
| 527152 | Fits 12, 18 and 22 qt, Midnight Blue |



Green Epoxy Shelving & Shelving Kits

- Durable units covered in green epoxy
- Kits include (4) shelves & (4) posts
- Comes in a variety of sizes
- Casters & individual shelves also available separately

KITS

| | |
|--------|------------------|
| 859207 | 18" x 36" x 74"H |
| 859332 | 18" x 48" x 74"H |
| 859333 | 18" x 60" x 74"H |
| 859208 | 24" x 36" x 74"H |
| 859209 | 24" x 48" x 74"H |
| 859210 | 24" x 60" x 74"H |

REPLACEMENT SHELVES

| | |
|--------|-----------------|
| 732065 | 18" x 36", Pk 4 |
| 730061 | 18" x 48", Pk 4 |
| 785468 | 18" x 60", Pk 2 |
| 857023 | 24" x 36", Pk 4 |
| 857088 | 24" x 48", Pk 4 |
| 857087 | 24" x 60", Pk 2 |

NON-SKID CASTERS

| | |
|--------|------|
| 859459 | 4 Pk |
|--------|------|



Multiple Warehouses



Front of the House

From beverage servers to table accessory items, our front of house selection covers a variety of areas in your dining room. Enhance your coffee service by presenting drinks in insulated carafes or swirl designed servers or ensure the customer has the proper tools such as sauce cups and lobster crackers for enjoying their meals.



Basket
858998

Carafe Servers
348301 20 oz
346209 50.70 oz

Bell Creamer
859046

Gooseneck Teapot
859283



Sauce Cups

- 14/1 stainless steel
- Perfect for individual servings
- Pk 1 dz

859184 1.50 oz

859185 2.50 oz



Gravy Boat

- 5 oz capacity
- Stainless steel with gadroon base
- Use for gravy, sauces or individual servings

859106



Bell Creamers

- Stainless steel with mirror finish
- Mini pitchers add vintage charm

859045 3 oz

859046 5 oz



Gooseneck Teapot

- 10 oz pot
- Mirror-finished stainless steel
- Hollow handle insulates for comfortable pouring
- Hinged cover for easy refilling

859283



Economy Creamer/Server

- 10 oz capacity
- Stainless steel with dome top
- Great for cream, syrup or sauce

859434

Plastic Servers

- Foam insulation, 2 to 3 hours retention
- Reverse swirl design
- Comes in black or white
- Replacement ABS plastic lids available
- Hand wash



SERVERS

859442 17 oz, Black

723853 17 oz, White

784690 40 oz, Black

859443 40 oz, White

REPLACEMENT LIDS

859444 Fits 17 oz, White

859445 Fits 40 oz, White

Insulated Carafe Servers

- 18/8 stainless steel and black
- Push button lid and over molded non-slip handle
- Holds heat 4 to 6 hours
- Hand wash

SERVERS

348301 20 oz

346059 33.80 oz

346209 50.70 oz

REPLACEMENT LIDS

859373 Regular, Black

859374 Decaf, Orange



Front of the House



Water Pitchers

- Polycarbonate

859153 32 oz, Clear

859154 60 oz, Clear



Multiple Warehouses



Round Salad Bowls

- Woven wood
- Lightweight and durable
- Perfect alternative to china and melamine

423509 6" dia.

732080 8" dia.



Ashtray

- 4¼" dia.
- Made of heat-resistant Bakelite plastic
- Black
- 7 snuff
- Pk 2 dz

729161



Lobster Cracker

- 6½" long
- Double jaw
- Stainless steel

859128

Industry Trend

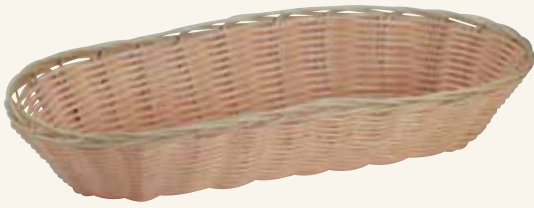
Craft condiments are a great way to incorporate local flavor into signature dishes and when served on the side, allows customers to choose how intense they want their food to taste.



Table Crumber

- 6" long
- Aluminum with elegant gold finish
- Pocket clip
- Keeps the tablecloth clean and tidy

859047



Oval Rattan Basket

- Plastic
- 9"L x 6¼"W x 3"D
- Synthetic resin-coated steel wire
- Natural look of rattan
- Great for bread, fruit or silverware

858998



Oval Fast Food Basket

- 9½"L x 5⅞"W x 2"D
- Plastic
- Red

858999



Platter Basket

- 10⅝" x 7¼"
- Plastic

858996 Black

858997 Red



Oval Steak Platter

- 10"W x 7"D
- Polished aluminum
- Give guests a sizzling presentation

859169



Steak Platter Underliners

- Wood

859170 11⅞"L x 8"W x ¾"H

859171 13½"L x 9¼"W x ¾"H



Tote Box

- 20"W x 15"L x 7"H
- Comes in black or grey

859032 Black

859033 Grey

High Chair & Belt

- 20¼" x 18⅞" x 27¼"
- Natural finish wood
- Polypropylene safety strap
- Black replacement belt available

859109 High Chair

859108 Replacement Belt



Front of the House



Tealight Candle

- 5 hour burn time
- Pk 500

859354



Patio Candles

- Available in clear, green & red
- Pk 1 dz

859357 Clear
859358 Green
859359 Red



Liquid Wax

- Available in various burn times

| | | PK |
|--------|----------|-------|
| 859344 | 8 Hours | 15 dz |
| 859345 | 10 Hours | 12 dz |
| 859346 | 15 Hours | 8 dz |
| 859347 | 24 Hours | 6 dz |
| 859343 | 36 Hours | 3 dz |
| 859348 | 50 Hours | 3 dz |



Candle Cartridges

- Comes in a variety of burn times

| | | PK |
|--------|----------|-------|
| 859349 | 10 Hours | 12 dz |
| 859350 | 15 Hours | 8 dz |
| 859351 | 24 Hours | 6 dz |
| 859352 | 36 Hours | 3 dz |
| 859353 | 50 Hours | 3 dz |



Votive Candles

- Comes in 10 & 15 hour burn times

| | | PK |
|--------|----------|-------|
| 859355 | 10 Hours | 24 dz |
| 859356 | 15 Hours | 12 dz |



Room Service Wick

- 2 hour burn time
- Pk 4 dz

859338



Stem Wick

- 6 hour burn time
- Pk 2 dz

859337



Multiple Warehouses



Liquid Wick

- Available in 4 & 6 hour burn times
- Pk 2 dz

859339 4 Hours

859340 6 Hours





Kitchen Smallwares

Purchase quality smallwares to aid in the preparation of signature dishes in your commercial kitchen. These essentials help maintain a successful operation to advance meal service and increase productivity in your establishment.

Strainers

859446 10"

859282 12"

Round Skimmer, 7"

859213

Square Skimmer, 6¾"

859212

Medium Mesh

Culinary Basket, 8"

859051

Kitchen Smallwares



White Cutting Boards

- Made of ½" thick low density polyethylene
- Chip, peel and crack resistant
- Stain-resistant
- Dishwasher safe
- NSF

- 859052 12" x 18"
- 859053 15" x 20"
- 859059 18" x 24"



Color-Coded Cutting Boards

- 18" x 24"
- Made of ½" thick low density polyethylene
- Chip, peel and crack resistant
- Reduces cross contamination
- NSF

- | | | | |
|--------|--------|--------|----------|
| 859057 | Green | 859055 | Blue |
| 859058 | Red | 859056 | Brown |
| 859060 | Yellow | 859054 | Assorted |



Quick Safety Tip

Train staff to use color-coded cutting boards for each specific type of food to prevent cross contamination.

Green - Fruits & Vegetables
 Red - Meat
 White - Dairy

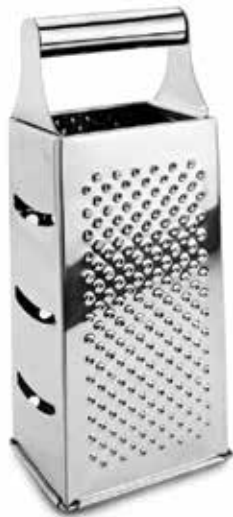
Yellow - Poultry
 Blue - Raw Fish & Seafood





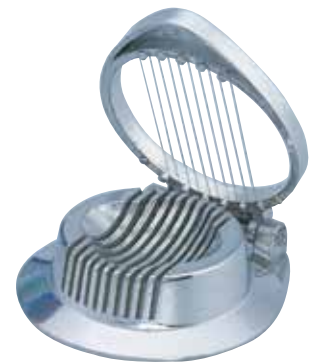
Grater

- 9½"
 - Stainless steel
 - Round handle
- 859105



Egg Slicer

- Cuts round or oval slices for salads and garnishes
 - 4¼" dia. slicing surface
 - Cast aluminum
- 859085



Lime Squeezer

- 6½" long
 - 4mm hold strainer
 - Chrome-plated
- 859227

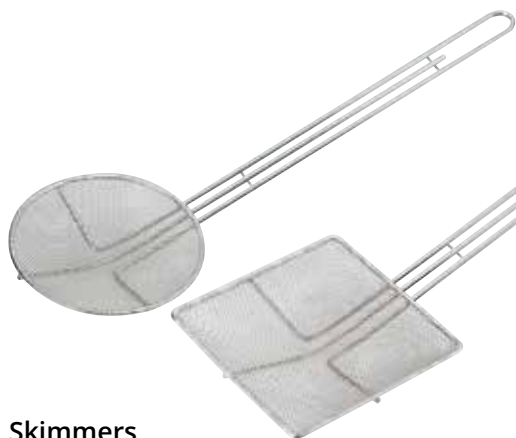


Giant Can Punch

- 6¾" long
 - Bright nickel-plated steel
 - Includes bottle cap remover
- 859039



Kitchen Smallwares



Skimmers

- Long handle
- Made of nickel-plated steel
- Great for skimming, stirring and straining

$\frac{1}{6}$ " FINE MESH

859212 6 $\frac{3}{4}$ " Square, 13 $\frac{3}{4}$ " Handle

859211 6 $\frac{1}{2}$ " Round, 13 $\frac{1}{2}$ " Handle

$\frac{1}{2}$ " MESH

859213 7" Round, 13 $\frac{1}{8}$ " Handle

859214 9" Round, 13 $\frac{1}{8}$ " Handle



Culinary Baskets

- Nickel-plated baskets
- Available in fine, medium and coarse mesh

859048 8" dia., Coarse

859051 8" dia., Medium

859049 8" dia., Fine

859050 10" dia., Medium



Fryer Baskets

- Color-coded handles

859086 13 $\frac{1}{4}$ "D x 6 $\frac{1}{2}$ "H x 5 $\frac{1}{16}$ "W,
Green Coated Handle

859087 16 $\frac{3}{4}$ "D x 8 $\frac{3}{8}$ "H x 6"W,
Yellow Coated Handle



China Cap Strainers

- Corrosion-resistant stainless steel
- Available in fine and coarse mesh
- Ideal for straining sauces, stocks and pureed soups

| | |
|--------|------------------|
| 859281 | 7" dia., Fine |
| 859278 | 10" dia., Fine |
| 859280 | 12" dia., Fine |
| 859277 | 10" dia., Coarse |
| 859279 | 12" dia., Coarse |



Round Strainers

- Chrome-plated wire, double mesh
- Reinforced bands for added strength
- Lacquered wood handles
- Double pan hooks

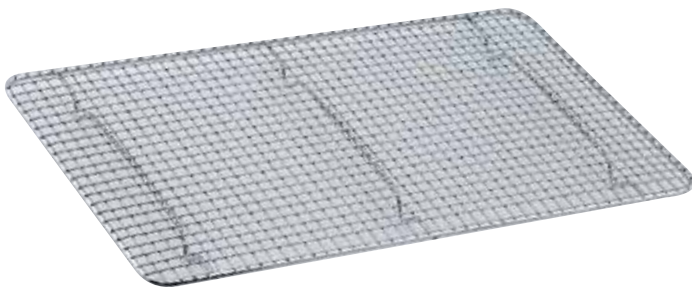
| | |
|--------|-----------|
| 859446 | 10½" dia. |
| 859282 | 12" dia. |
| 859447 | 14" dia. |



Stainless Steel Colanders

- Bright mirror finished stainless steel
- Side handles for easy transport
- Full ring base for added stability

| | |
|--------|-----------------|
| 734540 | 8 qt, 13" dia. |
| 859043 | 13 qt, 16" dia. |



Pan Grates

- Chrome-plated steel wire
- Keeps food from sticking to bottom of steam pans
- Raised to allow draining of boiled or fried foods

| | |
|--------|-------------------------------------|
| 859244 | 5" x 10" |
| 859243 | 8" x 10", Fits ½ Size Steam Pan |
| 859245 | 10" x 18", Fits Full Size Steam Pan |
| 859441 | 16" x 24", Fits Full Size Bun Pan |



Kitchen Utensils

Equip your employees with multifunctional utensils to assist with daily kitchen operations. Whip batters and cook savory recipes to perfection using durable essentials to create memorable culinary masterpieces for dining guests.

Vegetable Peeler
859151

Piano Whip, 12"
859324

Piano Whip, 14"
859325

Sandwich Spreader, 9"
859225

Tong, 9"
859299

Green Handle
Spoodle
859178

Blue Disher
859076

Red Disher
859078

Yellow Disher
859077

Orchid Disher
859080

Kitchen Utensils



Cost Saving Tip

Dishers and ladles do double work in the kitchen allowing staff to plate with ease while controlling portion size. This helps manage costs, maintain inventory and keep signature dishes consistent.



Color-Coded Ladles

- One-piece stainless steel

- 859119 2 oz, Blue Handle
- 859121 3 oz, Ivory Handle
- 859123 4 oz, Grey Handle
- 859125 6 oz, Teal Handle
- 859127 8 oz, Orange Handle



Multiple Warehouses

One-Piece Ladles

- Mirror finish stainless steel for lasting durability
- No welds or crevices to harbor food or bacteria

- 859116 1 oz, 10¹/₁₆" Handle
- 859118 2 oz, 10³/₄" Handle
- 859120 3 oz, 12³/₈" Handle
- 859122 4 oz, 12¹/₂" Handle

- 859124 6 oz, 12¹/₂" Handle
- 859126 8 oz, 12⁹/₁₆" Handle
- 859117 12 oz, 12¹/₁₆" Handle





Squeeze Dishers

• Comes in variety of sizes

| | | | |
|--------|------------------|--------|-------------------|
| 859073 | Size 8, 4 oz | 859068 | Size 30, 1.25 oz |
| 859063 | Size 10, 3.75 oz | 859069 | Size 40, .875 oz |
| 859064 | Size 12, 3.25 oz | 859070 | Size 50, .625 oz |
| 859065 | Size 16, 2.75 oz | 859071 | Size 60, .5625 oz |
| 859066 | Size 20, 2 oz | 859072 | Size 70, .50 oz |
| 859067 | Size 24, 1.75 oz | | |



Dishers

- Stainless steel bowl to prevent corrosion
- Color-coded polypropylene handles
- Handles grooved for a sure grip
- NSF

| | |
|--------|-------------------------|
| 859081 | Size 6, 4.7 oz, White |
| 859082 | Size 8, 4 oz, Grey |
| 859074 | Size 10, 3.75 oz, Ivory |
| 859075 | Size 12, 3.25 oz, Green |
| 859076 | Size 16, 2.75 oz, Blue |
| 859077 | Size 20, 2 oz, Yellow |
| 859078 | Size 24, 1.75 oz, Red |
| 859079 | Size 30, 1.25 oz, Black |
| 859080 | Size 40, .90 oz, Orchid |



Kitchen Utensils



859225



730570

Spreaders and Scrapers

- Stainless steel blades
- Comfortable handles



859226

PAN SCRAPER

730570 4 1/4" Blade, 5" Plastic Handle

SANDWICH SPREADERS - SERRATED BLADES

859225 3 3/4" Blade, 5 1/4" Plastic Handle

859226 3 7/8" Blade, 3 3/4" Hardwood Handle

Potato Masher

- 24" long
- Stainless steel
- Round

859131



Heavy Duty Grill Scraper

- 6"W blade, 14" overall length
- Blade is easy to remove
- Removes food & grease buildup
- Dishwasher safe

859107

Vegetable Peeler

- 6" long
- Stainless steel
- Double-edge floating blade
- Dishwasher safe

859151





Meat Tenderizer

- 9¹⁵/₁₆" long
- Aluminum head with wood handle
- One side is coarse cut, the other is fine cut
- Prepare and tenderize meat, poultry or fish

859284



Steak Weight

- 4¹/₄"W x 8¹/₄"L
- Cast iron with 1" dia. wood handle
- Ideal for cooking bacon without curling
- Use for grilling to speed up cooking

859228



Solid Turner

- 6³/₄" long stainless steel blade
- 5" long white plastic handle

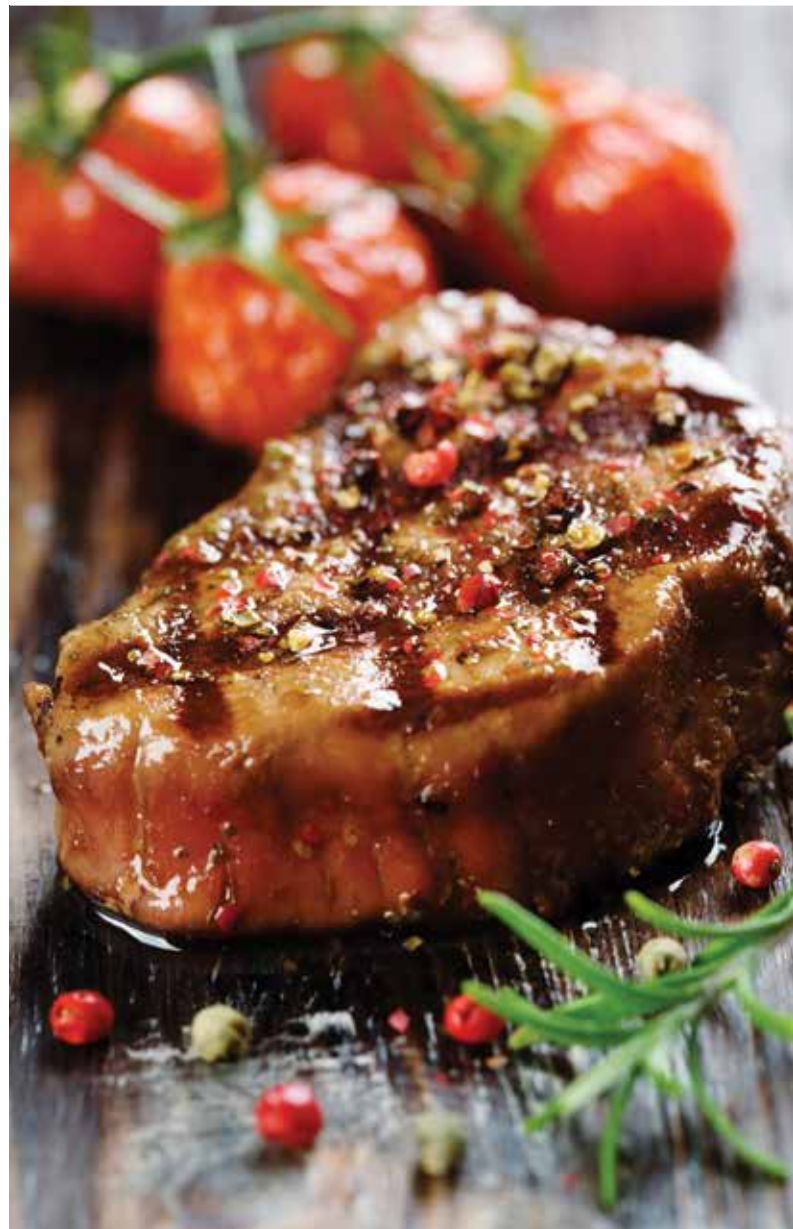
859316



Magnetic Knife Holder


- 18" long, 1⁷/₈" wide, 7⁸/₈" thick
- Hardwood panel w/ magnetic strips
- Securely grips knives

859129



Pizza Supplies

Create the perfect thin crust, deep dish, meat lovers or vegetarian pizza for guests with quality prep supplies. From pans to peels, we have the essential pieces to help you bake and serve signature pizzas.



Cutting Board
859059

Bain Marie Pot
728507

Pizza Cutter
859157

Grater
859105

Pizza Supplies



Pizza Cutters

- Stainless steel blades for precise slicing
- One-piece molded plastic handles
- 6" handle

859156 2½" dia. Blade
859157 4" dia. Blade



Dough Scraper

- 4½" x 6½"
- Plastic handle
- Stainless steel blade

859440



Pizza Peel

- 22" long overall
- 12" x 14" blade
- ¾" thick
- Tapered blade at tip & sides
- Wood

859164



Pizza Baking Screens

- Aluminum mesh
- Flat rim
- ½"W frame

859165 10" dia.
859166 12" dia.
859167 14" dia.
859168 16" dia.



Tapered Pizza Pans

- Aluminum
- Deep

859163 9" dia. x 1½"D
859159 12" dia. x 1½"D
859161 14" dia. x 1½"D



Wide Rim Pizza Pans

- Durable, aluminum construction

859158 10" dia.
859160 13" dia.
859162 16" dia.





Professional Cookware

Equip your kitchen with quality professional cookware for frying, boiling or searing your culinary creations. Purchasing long-lasting cookware is a necessity for any foodservice establishment looking to advance their menu selection.

Designed for optimum performance and convenience, our cookware is a staple in any commercial kitchen.

Small Fry Pan w/Sleeve

859096 7½"

859097 8½"

Large Fry Pan w/Sleeve

859093 10¾"

859104 9½"

Fry Pan no Sleeve

859103 7¾"

Professional Cookware



Aluminum Stock Pots & Covers

- Preserves liquids longer for cooking
- Thicker base for nice slow simmer and max flavor
- Lightweight, 3004 series aluminum
- Covers sold separately
- NSF



POTS

- 859274 12 qt, 9⁷/₈" dia. x 4³/₄"H
- 859275 20 qt, 11⁷/₈" dia. x 11¹/₂"H
- 859276 40 qt, 14¹/₂" dia. x 14¹/₂"H

COVERS

- 859375 Fits 12 qt
- 859376 Fits 20 qt
- 859377 Fits 40 qt

Stainless Steel Stock Pots with Covers

- 18/8 stainless steel
- 3-ply S/S aluminum core base
- Induction ready
- Replacement covers on page 78

- 859419 6 qt, 7⁷/₈" dia. x 7¹/₂"H
- 859420 10.50 qt, 9¹/₂" dia. x 9¹/₂"H
- 859421 17.50 qt, 11¹/₃₂" dia. x 11¹/₃₂"H
- 859422 25.25 qt, 12⁵/₈" dia. x 12⁵/₈"H



Quick Pro Tip

To remove discoloration from aluminum cookware, create a solution consisting of 2 tablespoons cream of tartar for each quart of water and boil for ten minutes.



Aluminum Braziers

- Medium weight, 3004 alloy aluminum
- Straight top edge and heavy plated loop handles
- Ideal for long, slow cooking
- NSF



- 859016 15 qt, 13⁷/₈" dia. x 5¹/₂"H
- 859017 24 qt, 17⁷/₈" dia. x 5¹/₂"H
- 859018 40 qt, 22⁷/₈" dia. x 5¹/₂"H



Stainless Steel Sauce Pots with Covers

- 18/8 stainless steel
- 3-ply stainless steel with 3004 aluminum core base
- Induction ready

- 859195 7.50 qt, 9¹/₂" dia. x 5⁷/₈"H
- 859191 11.75 qt, 11¹/₃₂" dia. x 6³/₄"H
- 859193 17qt, 12⁵/₈" dia. x 7¹/₂"H



Aluminum Sauce Pots

- Two loop handles
- 3004 series aluminum
- Wide bottom for max heat conduction
- Covers sold separately
- NSF



- 859196 8.50 qt, 10" dia. x 6¹/₄"H
- 859192 14 qt, 11³/₄" dia. x 7¹/₂"H
- 859194 20 qt, 12⁷/₈" dia. x 9"H

Choosing Cookware

Think about your menu when deciding between Aluminum and Stainless Steel cookware. Aluminum can heat and cool quickly; ideal for options that can be made and served quickly whereas Stainless Steel can hold heat well which is useful with foods that have a longer cook time.



Aluminum Tapered Sauce Pans

- Tapered with flared sides for easy stirring
- Smaller bottom diameter for less heat exposure
- 3004 series aluminum
- Covers sold separately
- NSF



| | |
|--------|---|
| 859187 | 2.75 qt, 7 ⁷ / ₈ " dia. x 4 ¹ / ₄ "H |
| 859188 | 4.50 qt, 9 ¹ / ₄ " dia. x 4 ³ / ₄ "H |
| 859189 | 6.50 qt, 9 ⁵ / ₈ " dia. x 5"H |
| 859190 | 8.50 qt, 11 ³ / ₈ " dia. x 5 ³ / ₄ "H |
| 859186 | 10 qt, 11 ¹ / ₂ " dia. x 5 ¹ / ₂ "H |



Stainless Steel Sauce Pans

- 18/8 stainless steel
- 3-ply stainless steel aluminum core base
- Induction ready

| | |
|--------|--|
| 859423 | 2.50 qt, 6 ¹ / ₄ " dia. x 4 ³ / ₈ "H |
| 859424 | 4.50 qt, 7 ⁷ / ₈ " dia. x 5 ¹ / ₂ "H |
| 859425 | 7.50 qt, 9 ¹ / ₂ " dia. x 5 ⁷ / ₈ "H |

Professional Cookware



Stainless Steel Fry Pans

- 18/8 stainless steel
- 3-ply S/S aluminum core base
- Induction ready
- Available in natural or non-stick finishes
- Corresponding covers on page 78

NATURAL FINISH

| | |
|--------|----------------------------------|
| 734807 | 7 ⁷ / ₈ " |
| 859100 | 9 ¹ / ₂ " |
| 859098 | 11" |
| 859099 | 12 ¹ / ₂ " |

NON-STICK COATING

| | |
|--------|----------------------------------|
| 859103 | 7 ⁷ / ₈ " |
| 859104 | 9 ¹ / ₂ " |
| 859101 | 11" |
| 859102 | 12 ¹ / ₂ " |



Aluminum Fry Pans

- 3004 series aluminum
- Silicone sleeve to keep handle cool to touch
- Available in non-stick coating and natural finish
- Ideal for frying, scrambling, sautéing or searing

NATURAL FINISH

| | |
|--------|-----------------------------------|
| 859091 | 7 ¹ / ₂ " |
| 859092 | 8 ¹ / ₂ " |
| 859088 | 10 ³ / ₈ " |
| 859089 | 12 ³ / ₈ " |
| 859090 | 14 ⁹ / ₁₆ " |

NON-STICK COATING

| | |
|--------|-----------------------------------|
| 859096 | 7 ¹ / ₂ " |
| 859097 | 8 ¹ / ₂ " |
| 859093 | 10 ³ / ₈ " |
| 859094 | 12 ³ / ₈ " |
| 859095 | 14 ⁹ / ₁₆ " |



Professional Cookware



Stainless Steel Paella Pans

- 18/8 stainless steel
- Relatively low sides for better heat dispersion
- Induction ready
- Ideal for slow cooking
- Covers included

| | |
|--------|------|
| 733542 | 12½" |
| 859148 | 14¼" |
| 859149 | 15¾" |
| 859150 | 17¾" |

Covers

- 18/8 stainless steel

| | | | |
|--------|-----|--------|------|
| 859426 | 6¼" | 859430 | 11" |
| 859427 | 7⅛" | 859431 | 12½" |
| 859428 | 7⅞" | 859432 | 14¼" |
| 859429 | 9½" | 859433 | 15¾" |



Multiple Warehouses



Kitchen Conversions & Measurements

Measurement Conversion Chart

| Units | Equals | Also Equals |
|-----------------|-------------|--------------------|
| 1 tsp | 1/8 fl oz | 1/3 Tbsp |
| 1 Tbsp | 1/2 fl oz | 3 tsp |
| 1/8 cup | 1 fl oz | 2 Tbsp |
| 1/4 cup | 2 fl oz | 4 Tbsp |
| 1/3 cup | 2 3/4 fl oz | 1/4 cup plus 4 tsp |
| 1/2 cup | 4 fl oz | 8 Tbsp |
| 1 cup | 8 fl oz | 1/2 pint |
| 1 pint | 16 fl oz | 2 cups |
| 1 quart | 32 fl oz | 2 pints |
| 1 liter | 34 fl oz | 1 qt plus 1/4 cup |
| 1 gallon | 128 fl oz | 4 quarts |

Abbreviations

| | |
|------|------------|
| bu | bushel |
| c | cup |
| dz | dozen |
| lb | pound |
| oz | ounce |
| qt | quart |
| Tbsp | tablespoon |
| tsp | teaspoon |
| gal | gallon |

Recommended Hot Food Storage Temperatures

| | |
|----------------------|-------|
| Steak and Roast | 145°F |
| Fish | 145°F |
| Pork | 160°F |
| Ground Beef | 160°F |
| Egg Dishes | 160°F |
| Chicken Breast | 165°F |
| Whole Poultry | 165°F |
| Casserole/Mixed Dish | 165°F |

Soup/Sauce Ladles

| Size | 1 oz | 2 oz | 4 oz | 6 oz | 8 oz |
|------------|---------|---------|---------|---------|-------|
| Equivalent | 1/8 cup | 1/4 cup | 1/2 cup | 3/4 cup | 1 cup |

Liquid Measurement Conversion Table

| Units | Fluid Dram | Tea Spoonful | Table Spoonful | Fluid Ounce | 1/4 Cupful | Gill (1/2 Cupful) | Cupful | Liquid Pint | Liquid Quart | Milliliter | Liter |
|----------------------------|------------|--------------|----------------|-------------|------------|-------------------|--------|-------------|--------------|------------|-------|
| 1 fluid dram | 1 | 3/4 | 1/4 | 1/8 | 1/16 | 1/32 | 1/64 | 1/128 | 1/256 | 3.7 | 0.004 |
| 1 teaspoonful | 1/3 | 1 | 1/3 | 1/6 | 1/12 | 1/24 | 1/48 | 1/96 | 1/192 | 4.9 | 0.005 |
| 1 tablespoonful | 4 | 3 | 1 | 1/2 | 1/4 | 1/8 | 1/16 | 1/32 | 1/64 | 15 | 0.015 |
| 1 fluid ounce | 8 | 6 | 2 | 1 | 1/2 | 1/4 | 1/8 | 1/16 | 1/32 | 30 | 0.030 |
| 1/4 cupful | 16 | 12 | 4 | 2 | 1 | 1/2 | 1/4 | 1/8 | 1/16 | 59 | 0.059 |
| 1 gill (1/2 cupful) | 32 | 24 | 8 | 4 | 2 | 1 | 1/2 | 1/4 | 1/8 | 118 | 0.118 |
| 1 cupful | 64 | 48 | 16 | 8 | 4 | 2 | 1 | 1/2 | 1/4 | 237 | 0.237 |
| 1 liquid pint | 128 | 96 | 32 | 16 | 8 | 4 | 2 | 1 | 1/2 | 473 | 0.473 |
| 1 liquid quart | 256 | 192 | 64 | 32 | 16 | 8 | 4 | 2 | 1 | 946 | 0.946 |

Read down: - 1/64 cupful = 1 fluid dram

Disher Capacity Chart

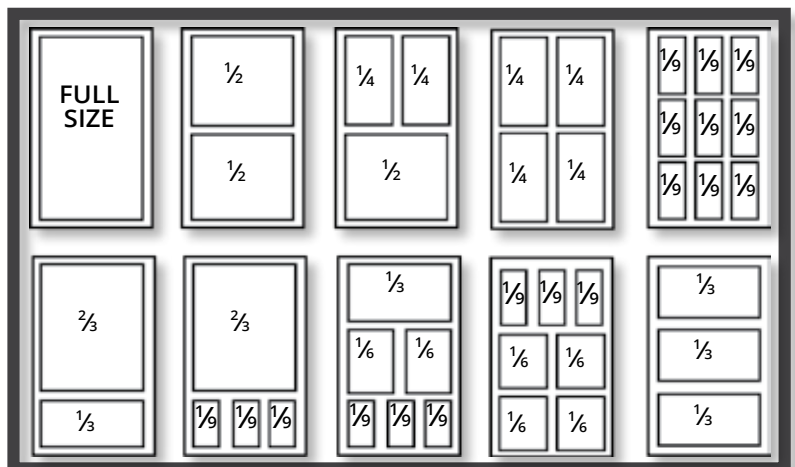
| Color | Disher Size | Bowl Dia. | Fluid Oz* | Wt Oz* | Patties/lb† | Scoops/Gal†† | Equivalent |
|---------------|-------------|-----------|-----------|--------|-------------|--------------|------------|
| White | 6 | 3" | 4.66 | 4.86 | 3 | 16 | 2/3 cup |
| Grey | 8 | 2 3/4" | 3.64 | 3.80 | 3 1/2 | 22 | 1/2 cup |
| Ivory | 10 | 2 5/8" | 3.19 | 3.33 | 4 | 24 | 5/8 cup |
| Green | 12 | 2 1/2" | 2.78 | 2.90 | 5 | 26 | 1/3 cup |
| Blue | 16 | 2 1/4" | 2.07 | 2.16 | 6-8 | 35 | 1/4 cup |
| Yellow | 20 | 2 1/8" | 1.77 | 1.84 | 9-10 | 42 | 3+ Tbsp |
| Red | 24 | 2" | 1.49 | 1.56 | 11-12 | 51 | 2 2/3 Tbsp |
| Black | 30 | 1 3/4" | 1.03 | 1.07 | 13-14 | 62 | 2+ Tbsp |
| Orchid | 40 | 1 1/2" | .68 | .70 | 15-16 | 70 | 1 1/2 Tbsp |

* Water Capacity † Hamburger Patties †† Ice Cream Scoop

Guide To Steam Table Pans

Complete flexibility for steam table services is available through a wide range of section pans including: Full Size, 2/3 Size, 1/2 Size, 1/2 Long Size, 1/3 Size, 1/4 Size, 1/6 Size, 1/9 Size. All are made to fit both 19 7/8" x 11 7/8" or 20" x 12" openings. This extensive line makes countless combinations available for meeting specific individual requirements.

| Size | Width (L to R) | Length (F to B) |
|-------------|----------------|-----------------|
| Full | 12" | 20" |
| 1/2 | 12" | 10" |
| 1/4 | 6" | 10" |
| 2/3 | 12" | 13 1/3" |
| 1/3 | 12" | 6 2/3" |
| 1/6 | 6" | 6 2/3" |
| 1/9 | 4" | 6 2/3" |



Standard depths are 2 1/2", 4" and 6". Adapter bars in 12" or 20" lengths are needed when your arrangement gives unsupported corners. A variety of lid sizes and types are available.



Culinary Essentials™

For assistance and ordering, please contact
your TriMark Sales Representative