

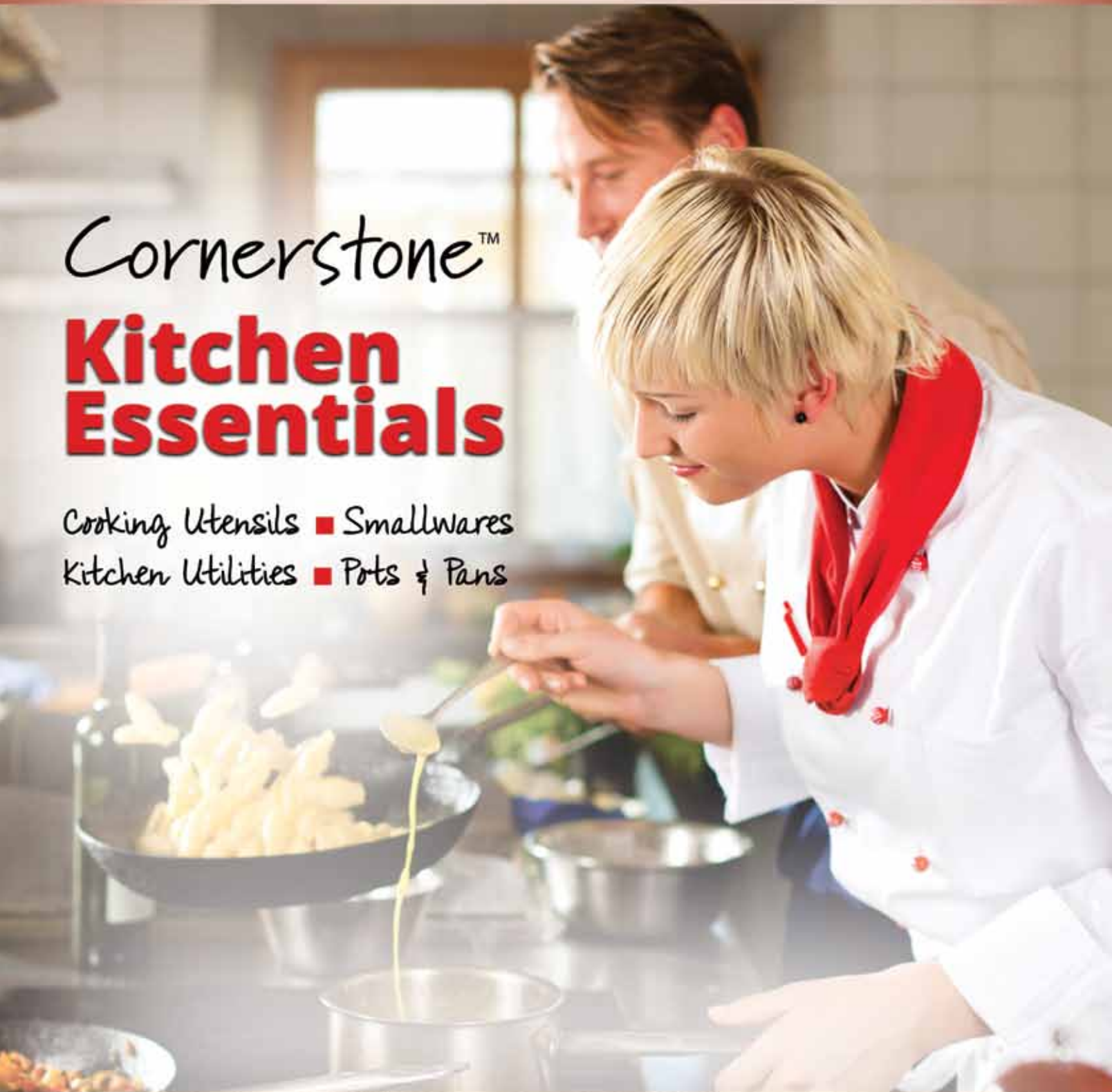


R.W. SMITH & CO.
www.rwsmithco.com

Cornerstone™


Kitchen Essentials

Cooking Utensils ■ Smallwares
Kitchen Utilities ■ Pots & Pans



— An Account with RWSmithCo.com opens up opportunities —

Steam Table Pans & Covers

Smooth curves and a bright finish for an elegant buffet. 22 gauge, 18/8 stainless steel solid and perforated pans. Tight-fitting pans will not allow steam to escape. These pans sit better in the well, have reinforced edges to prevent the corners from bending and can go from the freezer to the oven without re-panning. 



- FULL SIZE - 20³/₄" X 12³/₄"**
 083686 2¹/₂" Deep
 084376 2¹/₂" Deep, Perforated
 083703 4" Deep
 084396 4" Deep, Perforated
 083712 6" Deep
 084523 Flat, Solid Cover
 086381 Flat, Slotted Cover

- ONE-HALF SIZE - 12³/₄" X 10³/₈"**
 083636 2¹/₂" Deep
 081210 2¹/₂" Deep, Perforated
 083656 4" Deep
 084406 4" Deep, Perforated
 083666 6" Deep
 086341 Flat, Slotted Cover
 083646 Flat, Solid Cover


- ONE-THIRD SIZE - 12³/₄" X 6⁷/₈"**
 083836 2¹/₂" Deep
 083856 4" Deep
 083866 6" Deep
 086351 Flat, Slotted Cover
 083846 Flat, Solid Cover

- ONE-FOURTH SIZE - 10³/₈" X 6³/₈"**
 083936 2¹/₂" Deep
 083956 4" Deep
 083966 6" Deep
 086361 Flat, Slotted Cover

- ONE-SIXTH SIZE - 6⁷/₈" X 6³/₈"**
 083986 2¹/₂" Deep
 084006 4" Deep
 084016 6" Deep
 086371 Flat, Slotted Cover
 083996 Flat, Solid Cover

- ONE-NINTH SIZE - 6⁷/₈" X 4¹/₄"**
 088521 4" Deep
FLAT ADAPTER BARS
 083541 12"
 084081 20"

Braziers

Ideal for long, slow cooking, allowing for a more flavorful and juicy entree! Standard weight, 3003 alloy aluminum. Finished with a straight top edge & heavy plated loop handles, securely riveted. 



- 080270 15 qt
 080160 24 qt


Vegetable Insets & Covers

Stainless steel with a polished mirror finish inside, satin outside. Great for steam tables and buffets. Insets nest together for easy, compact storage.



- INSETS**
 083456 2¹/₂ qt
 083466 4¹/₄ qt
 083506 7¹/₄ qt
 083416 11 qt
COVERS
 083516 Fits 7¹/₄ qt
 083446 Fits 11 qt

Fry Pans

Ideal for frying, scrambling, sautéing or searing. 3003 series aluminum fry pans. Silicone sleeve included to keep handle cool enough to touch. 



Natural Finish

Non-Stick Coating


NATURAL FINISH

080190	7½"
086561	8½"
086576	10 ³ / ₈ "
086586	12 ⁵ / ₈ "
086596	14 ⁹ / ₁₆ "

NON-STICK COATING

086231	7½"
086241	8½"
086256	10 ³ / ₈ "
086266	12 ⁵ / ₈ "
086606	14 ⁹ / ₁₆ "


Tapered Sauce Pans

Tapered with flared sides for good stirring action. This pan features a smaller bottom diameter for less heat exposure. Perfect for cooking at lower temperatures for a longer period of time. 3003 series aluminum. 




080220	2¾ qt
080230	4½ qt
081246	6½ qt

Stock Pots & Covers

Preserves liquids longer for cooking stocks, soups, pasta, vegetables and seafood. The base is thicker for a good slow simmer and maximum flavor. 3003 series aluminum. 



Sauce Pots


Short and wide for slow cooking stews, sauces, soups, casseroles and roasts. Two loop handles make pouring easy. Wide bottom for maximum heat conduction. 3003 series aluminum. 



081042	14 qt
081052	20 qt

POTS		COVERS	
080240	12 qt	082240	Fits 12 qt
080250	20 qt	082250	Fits 20 qt
080260	40 qt	082260	Fits 40 qt

Portion Servers

Easy-to-serve, spoon-shaped server with the accurate portion control of a ladle. Color-coded, plastic contoured 10½" handles. Stainless steel bowls and shafts. Dishwasher safe. 



- 088651 Perforated, 4 oz, Green Handle
- 087411 Solid, 4 oz, Green Handle
- 085271 Solid, 8 oz, Blue Handle

One-Piece Ladles

One-piece construction resists breaking and is more sanitary. No welds or crevices to harbor food or bacteria. Mirror finished stainless steel for lasting durability.



- 083731 1 oz
- 083751 2 oz
- 083761 3 oz
- 083771 4 oz
- 083781 6 oz
- 083791 8 oz
- 083801 12 oz

Whips

Stainless steel whips with strong sturdy handles. Well built and easy to clean.

- | | |
|-----------------|-----------------|
| PIANO | FRENCH |
| 088541 10" long | 080010 10" long |
| 088561 12" long | 080020 18" long |
| 088571 14" long | |
| 089251 18" long | |



Basting Spoons

An indispensable tool for creating a beautiful brown glaze on the top of your favorite roast. One-piece stainless steel basting spoons are durable and sanitary.



- 084701 Perforated Spoon, 13"
- 084581 Solid Spoon, 13"
- 084721 Slotted Spoon, 13"
- 084711 Perforated Spoon, 15"
- 084591 Solid Spoon, 15"
- 084731 Slotted Spoon, 15"

Plastic Handle Basting Spoons

Plastic handles add a cool touch to a hot utensil. Basting spoons help to keep meats moist while roasting. Stainless steel bowls and shafts with attractive black handles.



- 085591 Solid, 13"
- 085611 Slotted, 13"

Utility Tongs

Heavy weight stainless steel tongs with a coiled spring for precise control. Tongs are the perfect kitchen tool for lifting, turning and transferring foods.

- 081761 9½"
- 081611 12"
- 081641 16"



Coated Utility Tongs

Durable one-piece stainless steel tongs with PVC coated handles. Color-coded to help prevent cross contamination.



- | | |
|-------------------|--------------------|
| 088321 9", Black | 087061 12", Black |
| 087331 9", Blue | 088231 12", Blue |
| 087391 9", Green | 081106 12", Green |
| 087341 9", Red | 088221 12", Red |
| 087381 9", Tan | 081146 12", Tan |
| 081066 9", White | 081156 12", White |
| 087361 9", Yellow | 088241 12", Yellow |

Pom Tong

One-piece stainless steel tongs. No crevices or nooks to harbor bacteria. 6" long size makes it ideal for self-service areas.



041471

Measuring Spoon Set

Stainless steel measuring set in ¼ tsp, ½ tsp, 1 tsp and 1 tbsp. Convenient ring keeps all the spoons in one place.



084091

Round Strainers

Chrome-plated wire strainers with reinforced rims for added strength. Lacquered wooden handles and double pan hooks for ease in lifting and straining vegetables and pastas.



- 081771 10½" dia.
- 086976 12" dia.
- 086986 14" dia.

Measuring Cup Set

Stainless steel construction for long life durability. Handles have holes for easy hanging and storage. Includes 1 cup, ½ cup, ⅓ cup and ¼ cup.



084074


Culinary Baskets

From fine mesh to coarse, these nickel-plated baskets provide the ideal solution to your culinary needs. Whether blanching or frying, your job will be easier.



- 087026 Coarse
- 087036 Medium
- 087046 Fine

Heavy Weight Mixing Bowls

Bright mirror finished stainless steel mixing bowls are ideal for all sorts of prep work. Whip cream, knead dough, toss salads, mix batter, and more. 



- 083811 3 qt
- 083821 5 qt
- 083906 8 qt
- 083926 13 qt
- 080926 20 qt

Colanders

Stainless steel with a bright mirror finish. Side handles for easy transport. The full ring base adds stability.



- 084381 8 qt
- 084391 13 qt

China Cap Strainers

An absolute necessity for straining sauces, stocks and pureed soups. Corrosion-resistant stainless steel for long life durability.



- 084221 10" dia., Fine
- 084231 10" dia., Coarse
- 084871 12" dia., Coarse

Skimmers

Great for skimming, stirring and straining all types of food. Made of nickel-plated steel wire with a long handle.



- $\frac{1}{16}$ " FINE MESH
- 084631 6 $\frac{3}{4}$ " Square Skimmer, 13 $\frac{3}{4}$ " Handle
- 084741 6 $\frac{1}{2}$ " Round Skimmer, 13 $\frac{1}{2}$ " Handle
- $\frac{1}{2}$ " MESH
- 080300 7" Round Skimmer, 13 $\frac{1}{8}$ " Handle
- 091471 9" Round Skimmer, 13 $\frac{1}{8}$ " Handle

Bain Marie Pots

Mirror finished stainless steel looks great on the salad bar. Great for dressings, condiments or to hold serving utensils.



- 084031 1 $\frac{1}{2}$ qt
- 084041 2 qt

Vegetable Peeler

Stainless steel with a double-edge floating blade. Peels a variety of fruits and vegetables. Dishwasher safe.



061061

Egg Slicer

Quickly cuts round or oval egg slices for salads and garnishes. 4 1/4" diameter slicing surface. Made of cast aluminum so it won't rust.



084661

Cast Aluminum Scoops

Die-cast aluminum construction, highly polished inside and outside. Grooved finish handle with finger-grips. Perfect for scooping a variety of ingredients.



- 040166 12 oz, 12 1/16" long
- 080521 24 oz, 14 13/32" long
- 080531 58 oz, 18 3/8" long

Giant Can Punch

Bright nickel-plated steel. Includes bottle cap remover. 6 3/4" long.



084351

Spreaders and Scrapers

Stainless steel blades and comfortable handles make scraping and spreading easy.



061021

083036

036501

PAN SCRAPER

061021 4 1/2" Blade, 5" Plastic Handle

SANDWICH SPREADERS

083036 3 3/4" Blade, 5 1/4" Plastic Handle

036501 3 3/4" Blade, 3 7/8" Hardwood Handle

Pizza Cutters

Stainless steel blades for precise slicing. One-piece molded plastic handles provide a comfortable grip.



061031 2 1/2" dia. Blade

085361 4" dia. Blade

Dough Scraper

The classic tool for working with pizza and pastry dough. Stainless steel blade with a comfortable white plastic handle. 4 1/2" x 6 1/2".



080014

Can Tapper

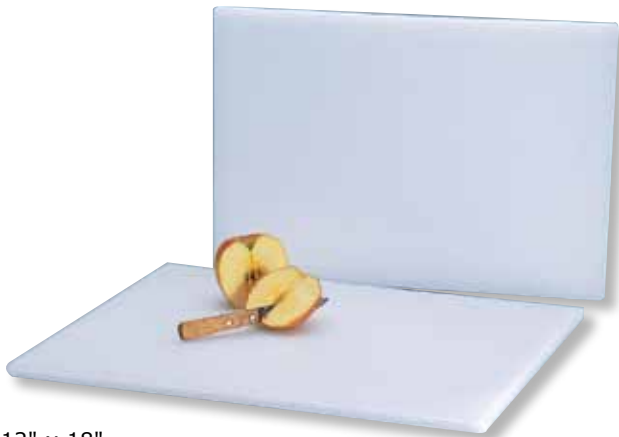
Great for small to medium sized cans as well as bottle caps. Nickel-plated stamped steel. 4 1/8" long.



041301

White Cutting Boards

Made of 1/2" thick low density polyethylene. Will not chip, peel or crack. Dishwasher safe. Stain resistant.



- 080616 12" x 18"
- 080716 15" x 20"
- 083916 18" x 24"

Magnetic Knife Holder

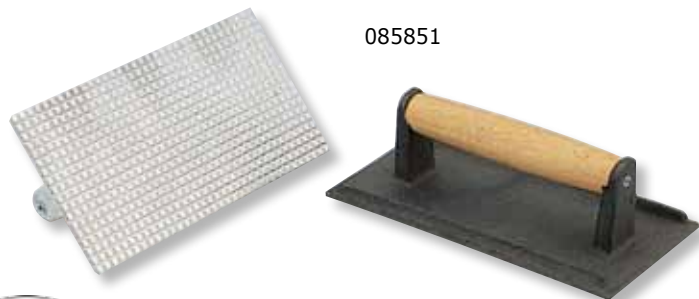
Hardwood panel with magnetic strips securely grips knives and keeps them safely within reach. 1 7/8" wide, 7/8" thick. 18" long.



084341


Steak Weight

Use for grilling to speed up cooking by pressing meat against the hot grill. Ideal for cooking bacon without curling. Cast iron with 1" diameter wood handle. 4 1/4" w x 8 1/4" l.



085851

Color-Coded Cutting Boards

Color-coded cutting boards reduce cross contamination. Made of 3/4" thick low density polyethylene. Will not chip, peel or crack. 18" x 24". 



- 080816 Green
- 080916 Red
- 080826 White

Meat Tenderizer

Prepare and tenderize meat, poultry or fish before marinating. Spices and flavors are absorbed quickly. Aluminum head with wood handle. One side is coarse cut, the other is fine cut.



061911

Thermometers

A variety of precision thermometers for accurate temperature monitoring.



084136

084196

086016

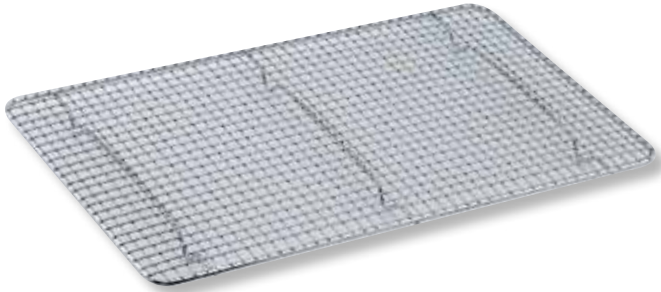
084106

084141

- 084136 Refrigerator/Freezer, -40° to 80°F
- 084196 Oven, 100° to 600°F
- 086016 Meat, 140° to 190°F
- 084141 Pocket, 0° to 220°F
- 084106 Candy/Deep Fry, 100° to 400°F

Pan Grate

Commercial quality pan grate keeps food from sticking to the bottom of steam table pans. Raised to allow draining of boiled or fried foods. Made of chrome plated steel wire.



- 083871 8" x 10"
- 083881 10" x 18"
- 089591 16" x 24"

Muffin/Cupcake Pan

12 cup pan is the perfect size for muffins and cupcakes. Made of aluminum with 3 oz capacity cups.



084251

Pizza Pans

Make hot, delicious pizzas in the most popular sizes. Durable, aluminum construction features a wide rim.



- 080280 13" dia.
- 080290 16" dia.

Aluminum Pie Pan

Bake your favorite pies to perfection. Angled sides prevent the crust from slumping. 10" dia.



080912

Graduated Measure

Aluminum construction with embossed bars to denote quart graduations. 4 qt capacity with convenient handle.



081211

Salad Spinner

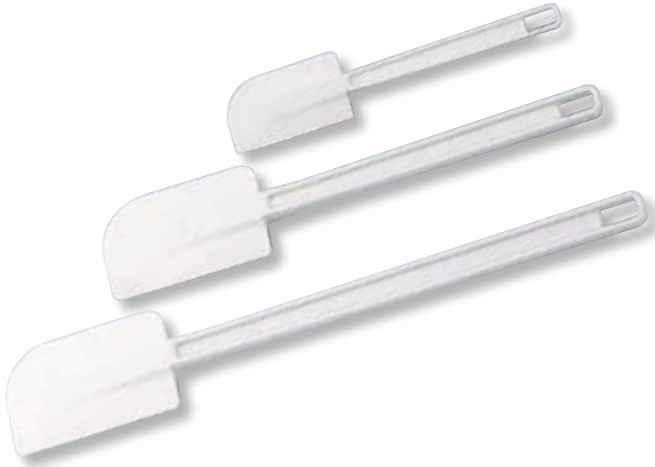
Plastic construction with nylon gears. 5 gallon capacity. Removes excess water from salad greens to keep the greens from going limp. Also enables salad dressing to stick to the leaves.



080410

Plate Scrapers

White vinyl blade is molded onto a high impact polystyrene handle. Heat resistant to 140°F. Flexible blade retains its shape.



- 080412 9½" long, 1⅜" w Blade
- 080171 9½" long, 2" w Blade
- 080181 13½" long, 2¾" w Blade
- 086321 16¾" long, 2⅓⅓" w Blade

Pastry Brushes

The chef's choice for use on delicate pastries and foods. Wood handle and plastic ferrule with boar bristles.



- 086021 1" Round, 8⅞" long
- 085641 1½" Wide, 8⅞" long
- 085661 2" Wide, 8⅞" long
- 085701 3" Wide, 9" long

High Heat Plastic Spatulas

The perfect utensil for non-stick cookware. White silicone rubber blade is molded onto a red nylon plastic handle. Heat resistant to 600°F.



- 081951 10" long, 2½" w Blade
- 081961 14" long, 2¾" w Blade
- 081971 16" long, 2¾" w Blade


Ice Cream Dishers

Stainless steel bowls to prevent corrosion. Polypropylene handles are color coded for size selection. Handles are grooved for a sure grip. 



- 088531 Size 6, 4⅔ oz, White
- 088501 Size 8, 4 oz, Grey
- 080913 Size 10, 3¾ oz, Ivory
- 080923 Size 12, 3¼ oz, Green
- 085401 Size 16, 2¾ oz, Blue
- 080933 Size 20, 2 oz, Yellow
- 080943 Size 24, 1¾ oz, Red
- 085391 Size 30, 1¼ oz, Black
- 080953 Size 40, ⅞ oz, Orchid

Malt Cup

Two-piece construction in stainless steel. Fits standard malt machines. Graduation marks molded on side. 30 oz capacity. 



051211

Bar Caddies

Keep garnishes organized and sanitary. Attractive stainless steel frame and hinges. Includes one-pint plastic inserts. Durable, molded solid acrylic lids are clear for easy viewing of contents.



040196

Glass Rimmer

Quickly and easily prepare glasses for a variety of cocktails. 3-tier rimmer for lime juice, sugar and salt. Plastic construction. 6⁵/₁₆"w x 7⁷/₈"l x 3"d.



041331

Julep Strainer

The winning bar tool for preparing mint juleps. Corrosion resistant stainless steel construction. 6¹/₄" long.



040220

Bar Organizer

Attractive black plastic organizer with multiple compartments too hold napkins, coasters and straws. 5³/₈"w x 9¹/₂"l x 4¹/₈"h.



041921

Cocktail Strainer

Strain unwanted leaves, fruit pulp and ice. The perfect accessory to the cocktail shaker. Stainless steel construction.



041251 2 Prong
041261 4 Prong

Cocktail Shaker

When it must be shaken and not stirred – the cocktail shaker is the essential tool. Stainless steel construction features a sturdy design with reinforced bottom. Works great with a cocktail strainer. 30 oz capacity.



041211

Waiter's Corkscrew

The preferred way to properly open a wine bottle. Black plastic handle over stainless steel. 4³/₈" long. Includes: retractable knife, corkscrew and bottle cap opener.



048011

Bar

Double Jiggers

Stainless steel with rolled edges for reinforcement.

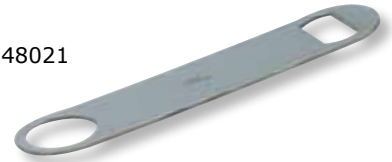
- 041651 3/4 oz and 1 1/4 oz
- 042051 1 oz and 1 1/2 oz
- 042061 1 oz and 2 oz



Flat Bottle Opener

Stainless steel in a convenient pocket size. Only 7" long.

048021



Ice Tongs

Mirror-finished stainless steel. Perfect for ice buckets and the bar area. 6 1/4" long.

041221



Ash Tray

Made of heat-resistant Bakelite® plastic. Attractive black color. 7 snuff. 4 1/4" dia. Packed 4 dz per case.

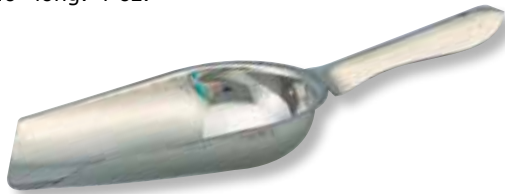
073184



Bar Scoop

Stainless steel with a curved handle. The perfect size for the bar. 10" long. 4 oz.

085881




Wooden Muddler

One-piece construction. Crushes herbs, fruits and spices to release the flavors. Use it to make mojitos, mint juleps and more. 8" long.

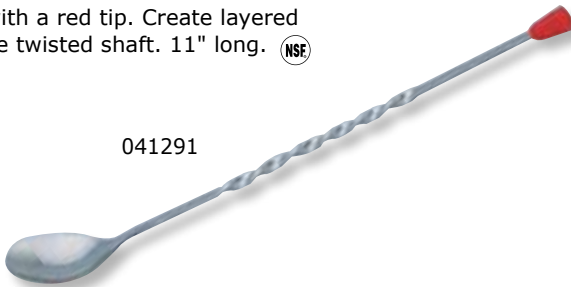
041461



Bar Spoon

Stainless steel with a red tip. Create layered cocktails with the twisted shaft. 11" long. 

041291



Bar Mat

Flexible black rubber mat with drainage area for jigger. Molded-in pattern provides a sure grip for wet glasses. 3 1/4" x 27".

041241



Hollow Handle Buffetware

Elegantly crafted buffetware in mirror-finished stainless steel. Sanitary, one-piece design with comfortable, pistol grip handles.



- 071381 Solid Serving Spoon, 11³/₈"
- 071411 Slotted Serving Spoon, 11¹/₂"
- 071401 Pastry Server, 10³/₄"

Pastry Stand

Beautiful stainless steel stand with pedestal base. Ships knock down, easy to assemble. 12¹³/₁₆" dia. x 6⁷/₈"h.



072671

Economy Creamer/Server

Stainless steel with dome top. Great for cream, syrups or sauce. 10 oz.



072891

Bell Creamers

Stainless steel with mirror finish. Miniature pitchers add a vintage charm to your buffet or tabletop.



071681

012501

- 012501 3 oz
- 071681 5 oz

Gooseneck Teapot

Anytime is tea time. This teapot is the perfect size for a personal serving of your signature brew. Mirror-finished stainless steel. Hinged cover for easy refilling. Hollow handle insulates for comfortable and cool pouring. 10 oz.



071671

Gravy Boat

Stainless steel with gadroon base. Use for gravy or group together on a buffet to show off individual servings and samplers. 5 oz.



071691

■ Buffet

Shaker/Dredges

Aluminum dredges with screw-on tops. Easy to fill and clean.



- 081161 12 oz w/o Handle
- 082671 12 oz w/Handle

Squeeze Bottle Dispensers

Use on the buffet or sandwich table for condiments and sauces. Clear plastic.

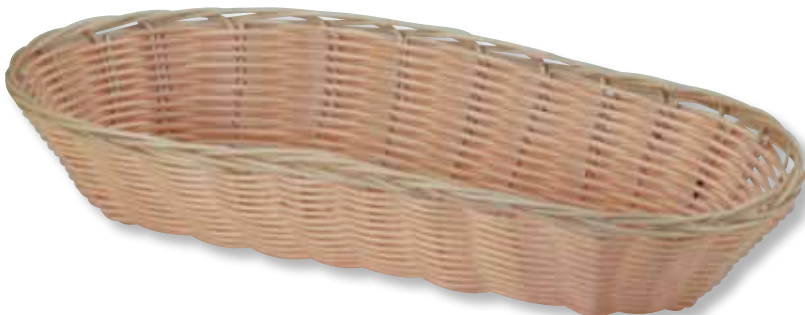


- 071241 8 oz
- 077531 16 oz, Wide Mouth
- 077391 24 oz, Wide Mouth

Oval Rattan Basket

The natural look of rattan. Great for bread, fruit, silverware and more. Synthetic resin coated steel wire. 9"l x 6 1/4"w x 3"d.

073361



Silverware Cylinders

Keep silverware clean and organized. Great for storage or displaying silverware at the buffet table.



- 242871 Stainless Steel
- 242301 Plastic

Sauce Cup

Dainty and delightful. Small, stainless steel sauce cups are perfect for individual servings. Packed 12 per case.



- 071721 1.5 oz
- 071701 2.5 oz

Lobster Cracker

Elegant and easy to use. Double jaw, stainless steel. 6 1/2" long.



061111

Fuel Holder

Stainless steel. Fits most chafer stands.



073711

Tray Stand

Easy to carry and set up. Chrome-plated tubular steel. 1" nylon strap w/cross bars. 19½" x 15".



241776

Wine Bucket and Stand

Elegant chrome-plated wine bucket makes an impressive presentation. Stand is collapsible for easy storage and transport.

051292 Wine Bucket, 8 qt
051286 Stand, 30" high



Trays

Non-skid surface keeps dinnerware and glassware from slipping.



FIBERGLASS

041091 14" dia., Round, Black

041901 16" dia., Round, Black

POLYPROPYLENE

072546 22" x 27", Oval, Black

Steak Platter

A thick, delicious steak deserves a hearty platter. Impress your guests with a sizzling presentation. Aluminum. 7" x 10".

081201



Table Crumber

Keep the tablecloth clean and tidy. Convenient, 6" long table crumber with pocket clip. Aluminum construction with elegant gold finish.

072721





R.W. SMITH & CO.

Foodservice Supplies | Kitchen Equipment | Professional Design Services

P.O. Box 26160 8555 Miralani Drive San Diego, CA 92126

SAN DIEGO
8555 Miralani Drive
P.O. Box 26160
858-530-1800

COSTA MESA
3186 Airway Ave # A,
Costa Mesa, CA 92626
714-540-6633

PALM SPRINGS
760-340-2424

SAN FRANCISCO
415-391-8641

LOS ANGELES
323-291-0848

SACRAMENTO
916-551-1458

HOUSTON, TX
281-498-3335

PHOENIX
602-528-3485

DALLAS
972-732-1722

TUCSON
520-742-6108

AUSTIN
512-605-6076

ORLANDO
407-859-0601

MIAMI
305-485-8800

Ft. LAUDERDALE
954-202-9606

All Other Areas
TOLL FREE 800-942-1101

PRSR STD
U.S. POSTAGE
PAID
SAN DIEGO, CA
PERMIT NO. 679

Allow 2-3 weeks delivery on special order items.

Every effort has been made to verify the accuracy of all data contained in this publication, however, we cannot assume responsibility for errors or omissions.

R.W. Smith & Co. provides chefs and cooks with the kitchen supplies, utensils and tools needed to achieve culinary excellence.

Cornerstone™

A premium line of kitchen essentials designed for the highest possible value, quality and efficiency.



R.W. Smith & Co. provides innovative ideas, superior products and specialized consultative services to enhance restaurant and foodservice operations.

DISCOVER MORE GREAT SAVINGS AND SPECIAL OFFERS ONLINE AT RWSMITHCO.COM